



## Public health briefing for the borough of Bury – 28 February 2022

### All Covid-19 restrictions lifted as we learn to 'Live Safely with Covid-19'

The Prime Minister announced last week that all legal Covid-19 restrictions ended on 24 February, and the UK will now move on to 'Living Safely with Covid-19'.

However, this does not mean Covid-19 has gone away. While case rates are falling, they are still relatively high and could easily go back up again, especially if a new variant emerges. Getting vaccinated and having a booster jab are the most important things we can do to protect ourselves and others.

#### What's changed:

- People who test positive for Covid-19 are no longer legally required to self-isolate. This applies to vaccinated and unvaccinated individuals.
- If someone feels ill, with symptoms of Covid-19, they are advised to stay at home, avoid close contact with other people for at least five days and to take a PCR test while these remain available to everyone.
- People who test positive for Covid-19 will be encouraged to inform their close contacts who will be advised to take additional precautions for 10 days, including working from home where possible, and limiting close contact with others outside their household.
- Routine contact tracing by Test and Trace ended on 24 February
- The Test and Trace Support Payment scheme will be discontinued from 24<sup>th</sup> February. People who were instructed to self-isolate before this date will still be able to claim support payments within the next 42 days.
- From 1 April, the majority of people won't be eligible for free LFT or PCR tests. Free tests will be limited to older people, those with underlying health issues and some key workers. It is advisable to continue to take an LFT test before meeting others and keep away from people if you test positive or have symptoms.

- Up to 24 March 2022, eligible individuals with Covid-19 who cannot attend work will still be able to claim statutory sick pay from the first day of their absence.

As a borough, we will continue to closely monitor the situation but living safely with Covid-19 means we all need to continue with basic good hygiene measures which also help protect against other infectious diseases.

Bury's Community Hubs are here for anyone who needs support, including those who are self-isolating. To access essential help, call 0161 253 5353 (9am to 5pm, Monday to Friday – excluding bank holidays) or text 07860 022876 (messages responded to by the next working day). Further information is [on the community hubs webpage](#).

## Children aged 5-11 to be offered a Covid-19 vaccine

The Government has decided that all children in the UK aged five to 11 will be offered a low dose of a Covid-19 vaccine.

Described as non-urgent, the rollout of the vaccine delivery to this age range will take place during April 2022. Parents will decide whether their child is vaccinated.

## Participants needed for national Covid-19 study

The PANORAMIC study is investigating whether new antiviral treatments for Covid-19 in the community can reduce the need for hospital admission and enable people to get better at home.

The nationwide study, funded by the National Institute for Health Research, is recruiting volunteers in Greater Manchester to take part in the study through the [PANORAMIC website](#). (<https://www.panoramictrial.org/>)

To be eligible, people need to be currently experiencing Covid-19 symptoms that started in the last five days; have had a positive PCR test for Covid-19; and be aged 50 or over or aged 18 and over with a listed pre-existing condition.

## Covid cases continue to drop

Cases of Covid-19 have continued to fall in all age groups across Bury.

The latest data shows that, in the week to 16 February, the infection rate was 246.6 per 100,000 people, representing 469 new cases. However, changes to the requirement for PCR testing mean that these figures are likely to underestimate the true number of cases.

### 7-day case figures:

Week ending 16 February: infection rate per 100,000 – 245.6 (469 new cases)

Week ending 9 February: infection rate per 100,000 – 372.3 (711 new cases)

Week ending 4 February: infection rate per 100,000 – 633.5 (1,210 new cases)

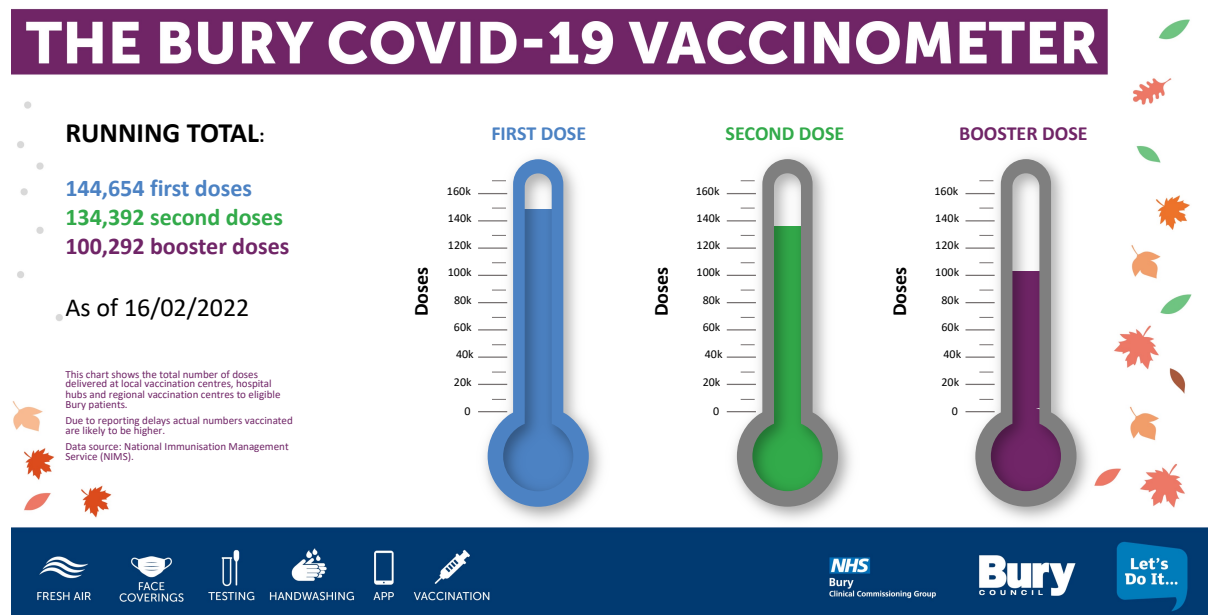
Week ending 29 January: infection rate per 100,000 – 726.2 (1,387 new cases)

# Vaccine and booster delivery reason for falling admissions

Protection from vaccination is a key reason for the falling case rates and falling hospital admissions. The more people who are vaccinated, the better protected everyone will be.

Bury's clinics continue to offer Covid-19 and flu vaccinations every week – and there's no need to book.

Figures for 9 February 2022 show that 100,292 people across Bury have now received a Covid-19 booster vaccination. The total number of first vaccinations delivered now stands at 144,654 and 134,392 second doses have also been administered.



## Mums-to-be still strongly advised to get vaccinated and boosted

Pregnant women are still being strongly advised to get two vaccinations and a booster to protect themselves from the increased risk of serious and devastating consequences of coronavirus (Covid-19). There is new research to show that the vaccination also protects the baby from Covid-19.

The main priority is to increase the number of pregnant women getting two jabs (8 weeks apart) and encourage those who have done so to go for a Covid-19 booster three months or more after their second dose.

*Let's do it for each other. Let's do it for Bury.*

# How to get a Covid-19 vaccination in Bury

Whether you're looking to get a first, second or booster jab, it's easy and convenient to get a Covid-19 vaccination in Bury. Eligible people can also get a flu vaccination at our local centres.

All the latest information on vaccine eligibility, when people are due to go, vaccine centre opening times and walk-in/pop-up sessions can be found at [bury.gov.uk/coronavirus-vaccine](https://bury.gov.uk/coronavirus-vaccine)

## Where to get a vaccination

Bury has four local centres offering both flu and Covid-19 vaccinations on a walk-in or bookable basis, located at:

- Ramsbottom Civic Hall
- Elizabethan Suite, Bury
- Radcliffe United Reformed Church
- Prestwich Walk-in Centre.

People can book for these clinics at [covid.nhsbookings.com/gmpcn](https://covid.nhsbookings.com/gmpcn) to avoid waiting in a queue and guarantee a specific appointment time.

Vaccinations are also available by appointment at seven pharmacies across Bury:

- Strachan's Chemist, Walmersley Road, Bury
- Cohen's Chemist, St Gabriel's Medical Centre Pharmacy, Prestwich
- Well Pharmacy, Church Street West, Radcliffe
- Well Pharmacy, Elms Square Precinct, Whitefield
- Barash Pharmacy, Bury New Road, Whitefield is offering appointments Monday to Friday, 9.30am to 12:30pm and 1:30pm to 5:30pm. Walk in without an appointment or book via the **National Booking Service** / call 119. First dose, second dose and booster vaccinations for people aged 16+

There is also a regular vaccination clinic at Fairfield General Hospital which members of the public can attend. Anyone aged 16 and over can walk in or book via the National Booking Service. Vaccinations for young people aged 12 to 15 can be booked for this clinic via the National Booking Service or by calling 119.

Clinic times:

- Tuesday, 8.30am-5.30pm
- Wednesday, 8.30am-5.30pm
- Thursday, 10.30am-6.30pm
- Friday, 10.30am-5.30pm.

The centre, which does have some free parking at the front, is located at: Vaccination Hub, Education Centre, Rochdale Old Road, Bury BL9 7TD.

The Manchester Mass Vaccination Centre at the Etihad Campus is open 8am to 8pm, 7 days a week, and offers an alternative for people who can travel.

For bookings at pharmacies, Fairfield General Hospital and the Manchester Mass Vaccination Centre at the Etihad Campus (can also be found at the Elizabethan Suite, Ramsbottom and Prestwich clinics via this route), call 119 or click through to the [National Booking Service](#)

Upcoming walk-in or [pre-book](#) appointment clinics running at the Ramsbottom, Bury, Radcliffe and Prestwich vaccination sites are listed below:

#### Vaccination clinics for March 2022

Date	Time	Venue	Offer
Friday 4 March	9am – 4.30pm	Prestwich Vaccination Clinic  Prestwich Walk-in Centre building  Fairfax Road, Prestwich, M25 1BT	First, second and booster vaccinations for people aged 16+
Saturday 5 March	8.30am – 1pm	Ramsbottom Civic Hall  Market Place, Ramsbottom, BL0 9AJ	<ul style="list-style-type: none"> <li>• First and second dose for children aged 12 to 15</li> <li>• First, second and booster vaccinations for people aged 16+</li> </ul>
Wednesday 9 March	8.15am – 5.15pm	Radcliffe United Reformed Church  Blackburn Street, Radcliffe, M26 3WQ	<ul style="list-style-type: none"> <li>• First and second dose for children aged 12 to 15</li> <li>• First, second and booster vaccinations for people aged 16+</li> </ul>
Saturday 12 March	8.30am – 1pm	Ramsbottom Civic Hall Market Place, Ramsbottom, BL0 9AJ	<ul style="list-style-type: none"> <li>• First and second dose for children aged 12 to 15</li> <li>• First, second and booster vaccinations for people aged 16+</li> </ul>
Sunday 13 March	8.30am – 5.30pm	Elizabethan Suite  Town Hall, Knowsley Street, Bury, BL9 0SW	First, second and booster vaccinations for people aged 16+
Saturday 19 March	8.30am – 1pm	Ramsbottom Civic Hall Market Place, Ramsbottom, BL0 9AJ	<ul style="list-style-type: none"> <li>• First and second dose for children aged 12 to 15</li> <li>• First, second and booster vaccinations for people aged 16+</li> </ul>
Sunday 20 March	9am – 4.30pm	Prestwich Vaccination Clinic, Prestwich Walk-in Centre building Fairfax Road, Prestwich, M25 1BT	First, second and booster vaccinations for people aged 16+
Thursday 24 March	8.15am – 5.15pm	Radcliffe United Reformed Church	<ul style="list-style-type: none"> <li>• First and second dose for children aged 12 to 15</li> </ul>

		Blackburn Street, Radcliffe, M26 3WQ	<ul style="list-style-type: none"> <li>• First, second and booster vaccinations for people aged 16+</li> </ul>
Saturday 26 March	8.30am – 5.30pm	Elizabethan Suite Town Hall, Knowsley Street, Bury, BL9 0SW	First, second and booster vaccinations for people aged 16+
Saturday 26 March	8.30am – 1pm	Ramsbottom Civic Hall Market Place, Ramsbottom, BL0 9AJ	<ul style="list-style-type: none"> <li>• First and second dose for children aged 12 to 15</li> <li>• First, second and booster vaccinations for people aged 16+</li> </ul>

## Correct waiting time for vaccination after positive Covid-19 test

People who have had a positive Covid-19 test need to wait before getting any dose of the vaccine. Those aged 12 to 17 need to wait 12 weeks (84 days), unless they are at high risk of illness, in which case the wait is just 4 weeks. People aged over 18 need to wait just 4 weeks (28 days).

This starts from the date they had symptoms, or the date of the positive test if they did not have any symptoms. Please choose a suitable appointment date when booking. They can also cancel and rebook an existing appointment for a later date if needed.

Check the latest clinics, and all other details of Bury's vaccination programme including eligibility, at [bury.gov.uk/coronavirus-vaccine](https://bury.gov.uk/coronavirus-vaccine)

## Financial aid for people with a positive PCR test

People may be entitled to a one-off payment of £500 through the [NHS Test and Trace Support Payment scheme](#) if they are legally required to stay at home and self-isolate or if they are the parent or guardian of a child who has been told to self-isolate.

People who may require financial support to self-isolate will need to get a confirmatory PCR test following a positive LFT, even if they have no symptoms. This financial support is ending soon.

## People with symptoms can still get tested

You can still get tested for coronavirus if:

- You have coronavirus symptoms (a high temperature, a new, continuous cough, or a loss or change to your sense of smell or taste). See [symptoms](#)
- You have been told to have a test before you go into hospital (e.g., for surgery)

**Please note:** If you're travelling abroad, and you need to pay for a test privately. [Find out about private providers of COVID-19 testing at gov.uk.](#)

### When to get tested:

- Get a test as soon as your symptoms occur.
- On days 1 to 4 you can get tested at a testing site or at home by using a home testing kit (if you're ordering a home test kit on day 4, do so by 3pm).

### Options for getting a test:

- [Local walk-through testing centre in Bury](#) (no appointment required)
- [Local testing centre in Bury](#) (by appointment only)
- [Local Department for Health and Social Care testing centres in Bury](#) (by appointment only)
- [Regional testing site](#) (by appointment only)
- [Home testing kit](#) (delivered by post)

### Getting tested at a local walk-through testing centre

The walk-through testing centre is for people aged 3 years or above. For a test for a child under 3 years, call 119 for advice.

You can get tested at a walk-through testing centre if you can walk or drive to the centre. You do not need to book an appointment. The walk-through testing centre is located at:

- Chesham Fold, 95 Chesham Fold Road, Bury BL9 6JZ (open between 9am to 3pm, Monday to Friday, except Bank Holidays).

### Getting tested at a local testing centre

The local testing centre is for people aged 3 years or above. For a test for a child under 3 years, call 119 for advice.

You must book an appointment to get tested, they do not offer a drop-in service.

If you need to drive to your appointment, parking is available nearby.

The test centre location is: Mosses Centre, Cecil Street, Bury BL9 0SB.

Please refer to the same advice for our walk-through testing centre in relation to travelling to and from the sites and what the test involves.

[Book a coronavirus test at the Mosses Centre](#) (not available on Bank Holidays).

### Getting tested at a Department for Health & Social Care (DHSC) testing centre

These test centres are suitable for people of any age.

You must book an appointment to get tested at one of these centres, they do not offer a drop-in service. Bookings are made via the gov.uk website or by phoning 119. If you need to drive to your appointment, parking is available nearby.

The test centre locations are:

- Prestwich test site: Longfield Centre car park (via Rectory Lane), Prestwich M25 1AY
- Radcliffe test site: Former Radcliffe Pool car park, Blackburn Street, Radcliffe, M26 1NG
- Ramsbottom test site: Great Eaves Road, Ramsbottom BLO 0PX
- Whitefield test site: Whitefield Library, Pinfold Lane, Whitefield, M45 7NY

The centres are usually open daily between 8am and 6pm

If you need assistance to take the test you can:

- ask someone from your household or support network to go with you to your appointment; or request a home testing kit (see details below).

See: [Gov.uk - Get a free PCR test to check if you have coronavirus \(COVID-19\)](#).

### **Getting tested at a regional testing site**

Regional coronavirus testing sites can test people of all ages, including children aged less than 3 years. You can book an appointment online or you can call 119. Visits to regional testing sites are by appointment only booked via the gov.uk website or you can call 119.

[Request a test at a regional testing site](#)

### **Getting tested via a home testing kit**

Home testing kits are suitable for people aged 3 years and over. For a test for a child under 3 years book an appointment at a local DHSC testing centre or a regional testing site or phone 119 for advice.

Home testing is easy but to be effective it must be completed within the first 4 days of your symptoms starting. On day 5, you would need to get tested at a testing centre instead. Home testing kits are delivered by post with simple instructions for returning a sample for testing. You can book an appointment via the gov.uk website or you can call 119.

Request a home testing kit: [Gov.uk - Get a free PCR test to check if you have coronavirus \(COVID-19\)](#).

### **Assisted lateral flow testing in Bury**

Anyone who feels they need help to take a lateral flow test can now get it at five pharmacies in Bury. This free service is available to anyone who does not feel confident carrying out their own tests, and these tests are supervised and processed by pharmacy staff.

IQ Pharmacy, 14 Princess Parade, Bury BL9 0QL

Opening hours:

Mon-Fri: 9am to 5.15pm

Sat: 9am to 3pm

Forman's Chemist, 12 Park Hill, Bury Old Road, Prestwich M25 OFX



Opening hours:  
Mon-Fri: 9am to 6pm.

Fishpool Pharmacy, 14 Parkhills Road, Bury BL9 9AX

Opening hours:  
Mon-Fri: 9am to 6pm  
Sat: 9am to 1pm

Manor Pharmacy, 367 Brandlesholme Road, Bury BL8 1HS

Opening hours:  
Mon-Fri: 9am to 6pm  
Sat: 9am to 1pm

Prestwich Pharmacy, 40 Longfield Centre, Prestwich M25 1AY

Mon-Fri: 8.30am to 6.15pm  
Sat: 9am to 1pm

Please note: This service is only available to people who **DO NOT** have any Covid-19 symptoms. The final tests of each day will be conducted 45 minutes before the closing times listed above.

<https://www.bury.gov.uk/index.aspx?articleid=16065>

### Lateral Flow Test kits available for collection at local libraries

We have four libraries where people can pick up Lateral Flow Test kits. There is no need to book, simply turn up and collect one – no collection code needed, or questions asked.

#### The libraries are:

##### Bury Library

Manchester Road, Bury BL9 0DG

Tel: (0161) 253 5872

Email: [bury.lib@bury.gov.uk](mailto:bury.lib@bury.gov.uk)

Tuesday	10am-4.30pm
Wednesday	10am-4.30pm
Thursday	12.30pm-7pm
Friday	10am-4.30pm
Saturday	9.30am-1pm

##### Prestwich Library & Adult Learning Centre

Longfield Centre, Prestwich M25 1AY

Tel: (0161) 253 7214

Email: [prestwich.lib@bury.gov.uk](mailto:prestwich.lib@bury.gov.uk)

Tuesday	10am-4.30pm
Wednesday	10am-4.30pm
Thursday	12.30pm-7pm
Friday	10am-4.30pm
Sunday	9.30am-1pm

##### Radcliffe Library

Stand Lane, Radcliffe M26 1NW

Tel: (0161) 253 7160

Email: [radcliffe.lib@bury.gov.uk](mailto:radcliffe.lib@bury.gov.uk)

Tuesday 10am-4.30pm

Wednesday 10am-4.30pm

Thursday 12.30pm-7pm

Friday 10am-4.30pm

Saturday 9.30am-1pm

### Ramsbottom Library & Adult Learning Centre

Carr Street, Ramsbottom BLO 9AE

Tel: (0161) 253 5352

Email: [ramsbottom.lib@bury.gov.uk](mailto:ramsbottom.lib@bury.gov.uk)

Tuesday 10am- 4.30pm

Wednesday 10am -4.30pm

Thursday 12.30pm- 7pm

Friday 10am-4.30pm

Saturday 9.30am-1pm

## Helping people through difficult times

Life has changed during the pandemic, and it's natural that people may feel worried or anxious, lonely, or frustrated. If someone needs extra support, Bury's Getting Help Line is a confidential telephone service, run by the voluntary sector, for people of all ages who are experiencing difficulties with their mental wellbeing.

Anyone can access advice, guidance and signposting to local services by calling the Getting Help Line on 0161 464 3679. [Find out more](#) about other mental wellbeing support services via our health and wellbeing hub on The Bury Directory.

## Keep ahead with cold weather alerts!

Cold weather can be really dangerous, especially for people aged 65 and above. As we get older it takes longer to warm up, which raises the risk of increased blood pressure, heart attacks and strokes. Older people can also suffer serious harm if they slip and fall in icy conditions.

We're advising people to sign up to the Met Office's email alerts [here](#) so that they can get early warnings of bad weather and make necessary preparations.

Age UK and the UK Health Security Agency (formerly Public Health England) have teamed up to produce some really helpful hints and tips for staying warm and well, perfect for printing out to give to older friends and relatives. Find them [here](#)

[This the final Borough Bulletin.](#) Find up-to-date information about Covid-19 visit [bury.gov.uk/coronavirus](https://bury.gov.uk/coronavirus)