

# **Getting to know your Smart Phone and other digital devices**

**Building your foundational understanding  
of the world of digital**

# What is a smart device?

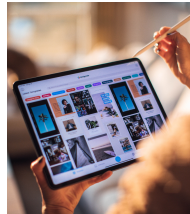
A smart device is a digital device that connects to the internet and makes use of Apps (applications) but they come in different shapes and sizes.

Desktop  
Computer

Laptop  
Computer

Tablet

Smart  
Phone



**There are many different types of smart devices, but the most common types are Desktops, Laptops, Tablets and Smart Phones.**

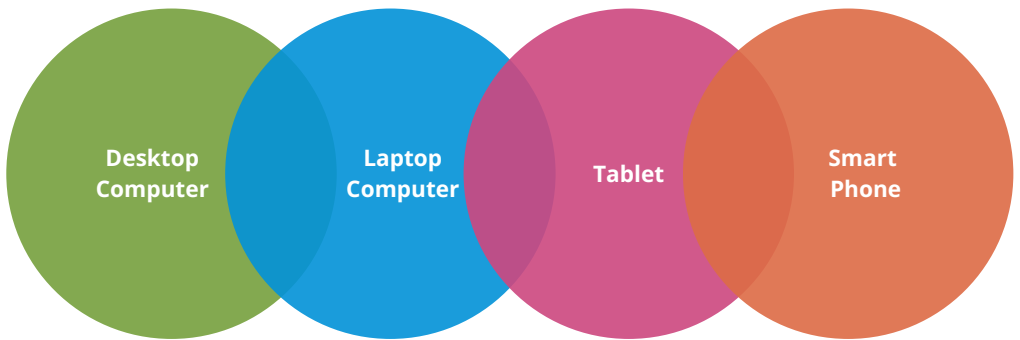
Despite their different names and sizes, they are all examples of personal computers

A personal computer means that the computer becomes completely personalised to you based on how you use them

Each smart device can be personalised through specific features, tools and Apps (applications)

# What is the difference between these devices?

While we call them different names and they may look different, they are becoming more and more similar



- All are computers but in different sizes
- Smart phones are getting bigger
- Tablets have attachable keyboards
- Laptops are now the similar size and weight to tablets
- Desktops are getting slimmer and may not have a 'tower'

**The biggest difference is the way we interact and use them .For example, a smart phone does not have a keyboard or a mouse, and so all of its functions are accessed through the touch screen.**

# What tools and features can I use on a smart phone?



**The tools and features included within a Smart Phones can vary however here is a few which are most common:**

Torch   Music Player   Television   Calculator   Telephone   Storage  
Calendar   Camera   Voice Recorder   Map   Address Book

**Here are some of the ways you can communicate with others using your Smart Phone:**

Text Messages   Emails   Phone Calls   Voice Notes  
Video Conferencing   Instant Messaging Apps

# What are apps?

An App (application) is a software download that you can install to your smart phone, tablet, laptop or desktop

## What do they do?

- Each app has been designed to do very specific things or give access to third party provider of **services, social media, specialised tools, entertainment and banking:**
- For example you can have a personal language learning app like Duolingo, a worldwide social media app like Instagram, or even an app for a spirit level on your phone or tablet
- Remember that every time you install app it may have to access your smartphone data such as location, contacts and microphone - you can change or update your privacy preferences in your **settings**



# What apps should I use?

There are hundreds of apps to choose from, here are a few to get you started:



**Remember that Apps have icons (small logo or picture) that represent them on your device, it can be difficult to spot the one that you are looking for**

## Contact us

If you would like to learn more or receive digital support then please send us an email on:

- [digitalinclusion@ageukcityoflondon.org.uk](mailto:digitalinclusion@ageukcityoflondon.org.uk)

Or visit our website:

- [www.ageukcityoflondon.org.uk](http://www.ageukcityoflondon.org.uk)