

# how to knit

Easy peasy (well, it is if you take a look at the champion 'how to knit' guide at [www.learn2knit.co.uk](http://www.learn2knit.co.uk) which will give you everything you need.) But if you've done a bit in the past, here's a reminder of the main stitch.

You'll need this stuff:



wool



small knitting needles  
(3 1/4 mm - 4mm)



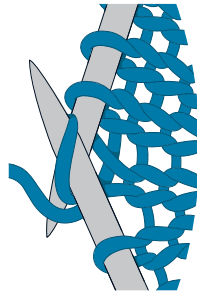
a sewing needle



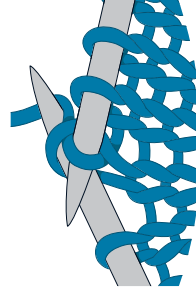
a pair of scissors



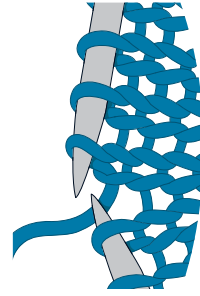
perhaps some bobbles



1. Insert the tip of the right needle through the first loop on the left needle, from front to back. Then wrap the working yarn around the tip of the right needle.



2. Pull the tip of the right needle and the yarn through the loop on the left needle.



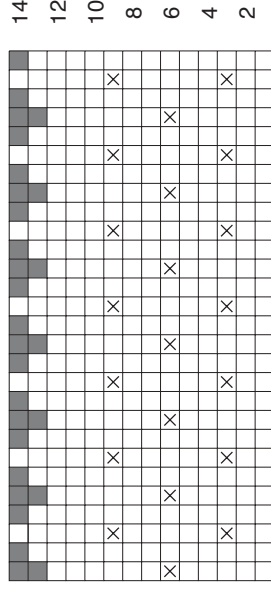
3. Slip the old loop off the left needle to complete the stitch. Continue knitting stitches in this way until all the stitches on the left needle have been knitted onto the right needle. You have now completed one row of the knit stitch. Now pat yourself on the back.

# advanced pattern

1. Stick the kettle on.

2. For this one you should use yellow and red yarn, and you'll also need some green for the stalk and leaves. Using your red double knitting yarn and some small needles, cast on 28 stitches.

3. Knit 2 rows. Then, starting with a knit row and working in stocking stitch throughout (knit 1 row, purl 1 row, knit 1 row etc) do the 12 rows as shown below.



□ = Red    ⊗ = Yellow    ■ = Green

4. For the next row, using green, knit 2 together to end, then for the next row purl 2 together to end (7 stitches), followed by the next row which is knit 1, knit 2 together three times (4 stitches).

5. Transfer the 4 stitches from the right to the left needle, pulling the yarn tight and knitting them again. Repeat six times. This is an l-cord and will be the strawberry's stalk.

6. To finish, knit 2 together twice then pass the first stitch over the second. Fasten off by pulling the yarn through the last stitch.

7. Make up by sewing the side seams together and finish off by threading the yarn down the strawberry stalk.

