



HANDY PERSON SERVICE

ISLINGTON



ISLINGTON

For a more equal future



Welcome to the Islington Handy Person Service

- ▶ A practical, community-focused initiative designed to help residents live safely and independently in their own homes. Whether you're an older adult, living with a disability, or a carer, this service offers reliable support for everyday tasks that can make a big difference.
- ▶ From small repairs to safety improvements, we're here to lend a hand and ensure your home remains a secure and comfortable place to live.

What Is the Handy Person Service

► we all have those little jobs around the house that need doing, but they're just a bit too tricky or time-consuming to tackle on our own. That's where the Handy Person Service comes in. It's a team of skilled, friendly professionals who can help with small repairs and safety improvements things like fitting grab rails, changing light bulbs, Hanging curtain, installing washing machines, flat pack furniture, ring doorbell and so much more.

► It's all about making your home safer, more comfortable, and helping you stay independent for longer. Think of it as a helping hand when you need it most.

Your Handy Person Service: What We Can and Can't Do"

Our Handy Person Service is designed to support residents with small, practical tasks around the home. We can assist with fitting items like curtain rails, blinds, shower rails, toilet seats, towel bars (non-heated), bath panels, grab rails, shelves, TV brackets, and battery-operated Ring doorbells. We also help with hanging pictures, mirrors, clocks, and notice boards, assembling flat-pack furniture, and basic plumbing tasks such as disconnecting or installing washing machines or dishwashers to existing fittings. Additional support includes moving furniture or appliances, opening and closing windows or doors, changing light bulbs, tuning TVs, and fitting safety items like door chains, locks, spyholes, key safes, child stair gates, and securing loose carpets or cables.

- Key cutting is also available for disabled or elderly tenants with carers

Please note, we do not carry out full plumbing work, painting,, electrical tasks, carpentry, tiling, or plastering. Our service is focused on light maintenance and practical support to help residents maintain a safe and comfortable living environment

WHO CAN USE THE SERVICE.

If you're aged 60 or over, have a disability, or you're a carer receiving Carer's Allowance, Direct Payments, Personal Independence Payment (PIP), or Employment and Support Allowance (ESA) you're eligible. And you don't need to live in a council property to qualify.



Now, if you don't quite fit into those categories, don't worry – we also accept referrals from social workers, housing officers, housing projects, and occupational therapists. The goal is to make sure that anyone who needs a bit of extra help at home can access it. Just remember, we can't carry out repairs that are the responsibility of your landlord.



How Much is the Service ?

- ▶ The Handy Person Service is designed to be affordable and accessible. If you're on a low income and receive a means-tested benefit, like Universal Credit, Housing Benefit, ESA, or Pension Credit, you'll only pay £10 per hour – and we even offer the first 15 minutes free for quick jobs like changing a light bulb.
- ▶ If you're not on a low income, the standard rate is £25 per hour. When you book, we'll let you know which rate applies, and if you're claiming benefits, just be ready to show proof. **All payments are taken in cash at the time of the visit, and you'll be given a receipt for your records.** It's all about making sure the service is fair, transparent, and available to those who need it most.

20XX

6

How to Book ?

- ▶  By Phone From a landline: 0800 694 3344
Press Option 6
- ▶ From a mobile: 020 7527 5400 Press Option 6
- ▶  By Email: handyperson@islington.gov.uk

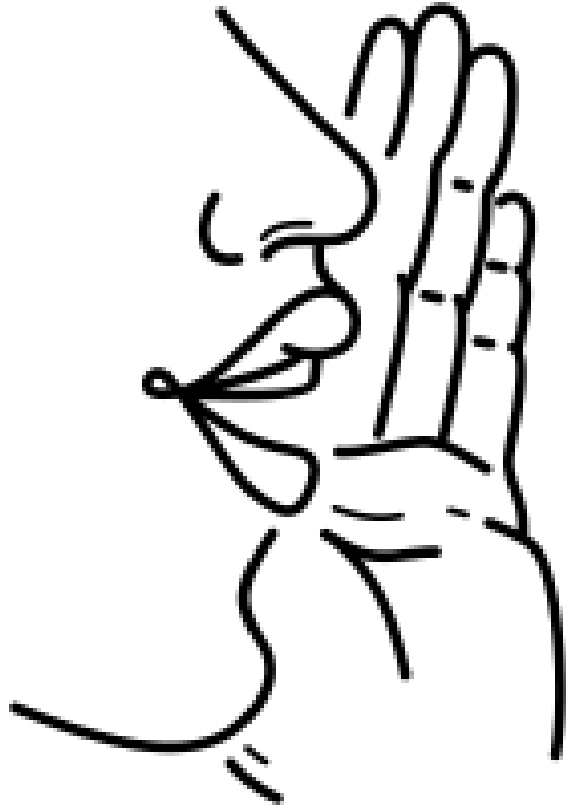


Gardening: A Fresh New Addition!



- ▶ 🌱 We're thrilled to announce that gardening is officially being introduced as part of our community support services! Whether it's planting vibrant flowers, tidying up outdoor spaces, or creating peaceful green corners, gardening brings joy, fresh air, and a sense of pride to your home. It's not just about beautifying your surroundings — it's about boosting wellbeing, encouraging movement, and reconnecting with nature. So, get ready to dig in, get your hands a little dirty, and watch your space bloom!





Spread the Word

- ▶ The Handy Person Service is here to support residents but not everyone knows it exists. That's where you come in. If you know someone who might benefit a neighbor, a relative, a friend please share this service with them. A small fix like a grab rail or a brighter light can make a big difference in someone's daily life. By spreading the word, you're helping to keep Islington safe, supportive, and connected. Let's make sure no one misses out on the help they deserve.

Your Questions and feedback Matter !

If there's anything you're unsure about or want to ask, feel free to speak up. I'm here to help — no question is too small!