

# Hospital Discharge Grants for Carers

The Hospital Discharge Grant for Carers scheme can help carers support the person who has been discharged from hospital.

## Are you a carer?

If you are aged 18+ and look after, help, or support an adult who wouldn't be able to manage everyday life without your help, and you're not employed to do it, then you are an unpaid carer.

- Does the cared for person live in Leicestershire or City of Leicester?
- Have they been discharged from hospital in the last 2 weeks?
- Have you incurred any additional costs linked to their discharge from hospital? For example - cleaning, housework, short-term sitting service, carer's loss of income due to time off work

! If 'YES' you may be entitled to a contribution towards the additional costs for carers when someone is discharged from hospital.

*Please note this is a one-off grant for carers looking after residents in Leicestershire or City of Leicester and is only applicable to discharges from 3 February 2025.*

**If the cared for person lives in the County of Leicestershire**

[www.supportforcarers.org/hospital-discharge-grant](http://www.supportforcarers.org/hospital-discharge-grant)

Email: [maureen@supportforcarers.org](mailto:maureen@supportforcarers.org)

Call: Support for Carers on 01858 468 543

**If the cared for person lives in the City of Leicester**

(Links to Age UK Leicester, Leicestershire and Rutland)

Email: [carers@ageukleics.org.uk](mailto:carers@ageukleics.org.uk) Call: Carers Support

Service - Age UK LLR on 0116 222 0556

Or speak to your health and social care professional who can help complete the form on your behalf. Alternatively, if you require support to complete the application, please contact the relevant organisation shown above.

**Grant applications can be made from 3 February 2025.**

## Carers Café

Do you look after someone ? We are here to help !

**FREE drop-in sessions for unpaid carers**

**Every Friday**

**from 1pm - 2pm**

**in the Community Room inside of Tesco's,  
Beaumont Leys Shopping Centre.**

**We offer free and confidential information and  
support for all carers aged 18+ if they or the  
person they care for live in Leicester City**

**For more information contact the Leicester Carers Support Service on  
0116 222 0538 or e-mail [carers@ageukleics.org.uk](mailto:carers@ageukleics.org.uk)**



**Leicester  
Carers**

Support Service



**Parent  
Carer  
Support  
Group  
of children  
under 25  
(SEND)**

**August 21st 2025**

**10am-12pm**

**In the**

**Bradbury Centre**

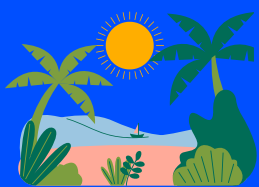
**Then every 3rd Thursday of the month**

**(Free Refreshments)**

**For More Information,**

**Call us: 0116 222 0538**

**Email: [carers@ageukleics.org.uk](mailto:carers@ageukleics.org.uk)**



### **Mondays 1-2pm**

#### ***Online Carers Café***

A virtual get together, to chat with other carers, to share and learn from each other

- 4th - Carers Virtual Café
- 11th - Carers Virtual Café
- 18th - Self Care Session
- 25th - Bank Holiday - No Zoom



Click here to join Zoom Meeting ID: 85042893399  
Passcode: 741602

### **Tuesdays 1-3pm**

#### ***Carers Café at Clarence House***

Have a break with other carers, including mindfulness and meditation

- 5th - Talk By Warm & Wise & Carers Bingo
- 12th - Quiz & Meditation
- 19th - Social, Meditation & Bingo
- 26th - Picnic at Abbey Park

### **Wednesdays 10-12pm**

#### ***Carers Café at Clarence House***

Join other carers in the Conference room for a cosy way to unwind..

- 6th - Walk in Watermead Park & Picnic
- 13th - Talk By Warm & Wise & Arts & Crafts
- 20th - Safeguarding Adults Refresher Session
- 27th - Meeting at John Lewis Cafe

### **Thursdays 7-8pm**

#### ***Online Busy & Working Carers Café***

Carers Support Team at Clarence House is inviting you to a scheduled Zoom meeting

- 7th - Carers Virtual Café
- 21st - Carers Virtual Café



Open discussions and Carer Learning  
Let us know what you would like to learn more about !

Click here to join  
Zoom Meeting ID: 882 5530 2474 Passcode: 073364

### **Thursday 14th August 10-11:30am**

#### ***Neurodiversity Peer Support Group***

In the Bradbury Centre, Clarence House.



**A relaxed group for carers looking after a young person or adult with ASD, ADHD and other neuro-diverse conditions. Led by a Carer Support Worker for specialist support and advice.**

### **Saturday 2nd August 10.00am**

#### ***Park Run (Brisk walk)***

Meet others at the War Memorial for a friendly 1 mile long walk and talk, at Victoria Park, Leicester.

Come and get up and out early on a Saturday morning, with coffee afterwards.



Call 0116 222 0538 to get involved