



THE GREAT HOSPITAL

1249

Agenda

- ▶ Who are we / Brief History
- ▶ Care
- ▶ Functions / Events

Who are we ?



- ▶ The Great Hospital is an Almshouse and Registered Social Landlord that has provided care and support to the citizens of Norwich since 1249, clergy of Norwich- sick & hungry male paupers & poor scholars were also beneficiaries.
- ▶ St Giles- patron St - lepers, nursing mothers & cripples
- ▶ We are a registered charity, governed by a Board of trustees who appoint a Chief Executive (known by the historical title of The Master) this person is responsible for the total management of the organisation and he / she has a team of managers to assist in the running of the establishment.
- ▶ We have independent living accommodation, an assisted living block, various community facilities for our community and venues that we use for internal and external functions.

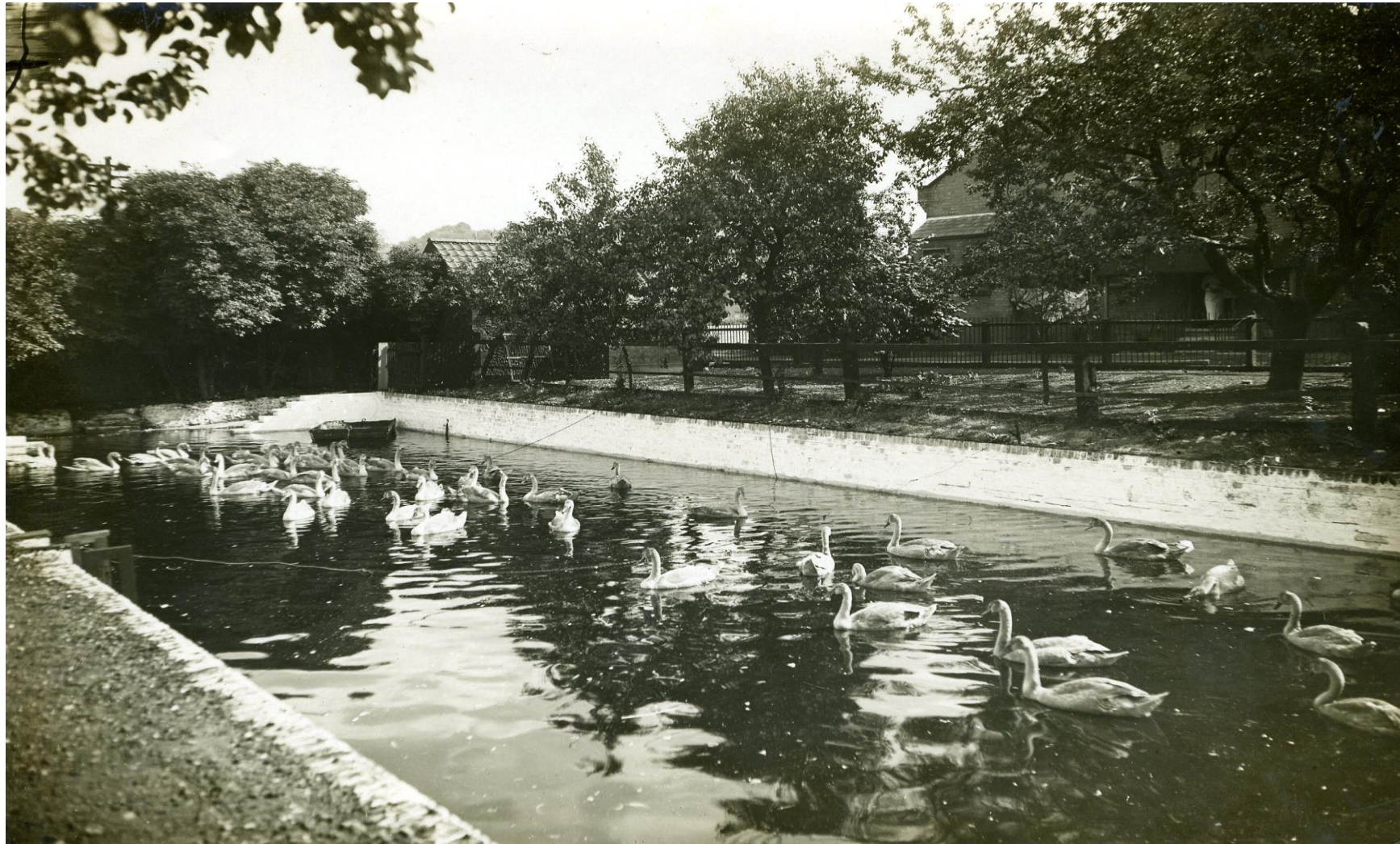
Time Line


- ▶ 1249 - original Charter for St Giles
- ▶ 1251-Hospital complete- only South Porch remaining now
- ▶ 1370-97- Derlyngton Tower Built - has been used a Mortuary!
- ▶ C1375- Infirmary Hall Built
- ▶ 1447/57 - Cloisters/ Masters/ dormitory built





- ▶ 1447-48- Refectory Built / gallery
- ▶ 1470- Current church of St Helens
- ▶ 1580- Infirmary bricked up and floored
- ▶ 1746-St Helens house built by Thomas Ivory
- ▶ 1793- Current Swan Pit built (Medieval one probably nearer to the river)



- 
- ▶ 1820- New wards Built (East & West)
 - ▶ 1827- White cottages built (Offices)
 - ▶ 1834- First mention of couples living here
 - ▶ 1849- Five Cottages built in the Masters orchard
 - ▶ 1901- Birkbeck Hall - built on site of original kitchen and brewhouse

- ▶ 1906- Holme Cottages built- now a new block of purpose built flats
- ▶ 1937- Suffield Court built
- ▶ 1943- No more swans - shortage of grain in the war
- ▶ 1972- Elaine Herbert House opened - now closed
- ▶ 1978- Prior Court opened- now our refurbished assisted living block

- ▶ 1982- Eagle ward closed
- ▶ 1982- New flats were built called Youngs Green
- ▶ 1986- St Helens House was converted into flats
- ▶ And most recently - Holme Terrace was officially opened in

Eagle Ward Ceiling











Holme Terrace





CARE

- ▶ Domiciliary Care Service
- ▶ Support
- ▶ Activities / Events
- ▶ Facilities / Gardens
- ▶ Use of Medieval buildings / Halls







Bowling Green



Functions / Events







Contacts-

- ▶ Events - frances@greathospital.org
- ▶ Care- anne@greathospital.org
- ▶ More info- www.greathospital.org.uk

The end

► Questions ?