

December 2025 Diary dates



Norfolk and Waveney
Talking Therapies

FESTIVE SOCIALS

Mon 22nd @ 10.30am – Carlton Marshes Walk
Meet at Nature Reserve Visitor Centre, NR33 8HU

Mon 22nd @ 1pm – Attleborough Library Social
Attleborough Library, NR17 2AH

Tue 23rd @ 6pm – Festive Quiz (online)
Via website

<https://www.nandwtalkingtherapies.org.uk/social-events>

Mon 29th @ 10.30am – Cromer Walk
Meet at the front of Cromer Pier, NR27 9HE

Tue 30th @ 3pm – Big End of Year Quiz (online)
Via website

<https://www.nandwtalkingtherapies.org.uk/social-events>

Wed 31st @ 10.30am – Waterloo Park Walk
Meet at Feed Cafe, NR3 3HX



for anxiety and depression

Christmas Events.....

Together for Christmas
 At Emmaus Norfolk & Waveney



Suggested donation of £2.50!

Celebrate Christmas at Emmaus
 A warm, festive gathering bringing the community together

Two-course Festive Meal | Live Carols |
 History Talk | Bingo | Arts & Craft

12 DECEMBER 2025	12PM - 2.30PM	DONATION £2.50
	EMMAUS Ditchingham, NR35 2DT	

01986 895444



emmaus.org.uk/
norfolk-waveney

Book your place:
olivia.jameson@emmaus.org.uk

Hellesdon-Gateway Vineyard Church .Booking essential-Sat 6th December 5-7.30pm

dani@gatewayvineyard.church

North Walsham Salvation Army on Hall Lane Monday 22nd December
 Christmas Brunch 10-12- call Penny Potter 01692 403955 or 07587 410690

Christmas Day Events

No one should have to spend Christmas day alone-

Norwich- The King's Centre: Norwich Open Christmas 11am to 5pm.

Call 01603 510751 For those living in Norwich.

Aylsham- Town Hall: Christmas Day lunch from Aylsham Parish Church .12-4pm

Call 07941 616956

Gorleston- St Mary Magdalene Church: Christmas Day lunch

Call 01603 920450 or 0800 2465571 Free phone 0800 246 5571 or 01493 655523

Dereham- Salvation Army: Carol service at 11am followed by mince pies at 12pm and Christmas lunch at 1pm please book by 19th December

call-01362 696341 Major Jenny Barwise dereham@salvationarmy.org.uk
or jennifer.barwise@salvationarmy.org.uk

Sheringham- St Andrews Methodist Church: Christmas lunch 25th Dec for those alone from 11am

Call- Nicky-07733317034 John-07492866242 Jane-07961060680

Martham Village Hall Christmas Day lunch 2pm- Call Jessica 07807014887 or Alison 07724543699

Catfield Community Christmas lunch at Catfield Village Hall, 12-4pm (book by 15th Dec) Monica & Barry 01692 581587 dianarackham@hotmail.com

North Walsham Community Centre Christmas Day lunch for those living alone in NW 1-4pm please pre-book- penelope.potter@btinternet.com
Lisa Owen & Penny Potter Tel- 01692 402220 07523104646 &
07791502374

Mundesley Christmas Day lunch 12 noon at The Community Hub (book by 18th Dec) Bob White 01263 721694

Thetford-Pine Close Christmas Lunch Thetford from noon –
Sharon Thompson shaz_eng_uk@hotmail.com 0794 0029510

Dereham- Silver Plate Café on Nunns Way Christmas Day lunch 12-2pm
booking essential call Dereham Aid Centre on 0754 0792050

Holt -The Venue Community Café, Christmas Day lunch .Booking essential
Samantha Riches 01263 713427 holtcommunitycentre@gmail.com

Diss -Baileys Fish and Chip shop, Christmas day 12-4pm for anyone alone – just drop by- 0788 2014068 01379 308130

Poringland Village Hall Christmas Day cafe 2-4pm

Rev Rachel Foster 01508 493 225

Ludham village only - **Boxing Day lunch** delivered for those living alone.

Margaret Watts (01692)-678570- must book

West Norfolk

King's Lynn- St Faith's Gaywood: Booking essential Christmas Day lunch 12 noon

Gillian Hiles 07841 632457

Downham Market-Downham Methodist Church Paradise Road, Downham Market, PE38 9JE .12.30 for 1pm lunch. To book please email

church.dmmc@outlook.com (Free to attend donations to The Army Benevolent Fund)

West Walton Village Hall- Are you or will you be alone this Christmas Day? If so why not come along for a chat, free food and drinks, games, music and a raffle 11am to 3pm . To book call Debbie- 07973537260.(Can be a lonely couple too)

Follow this link to **Lily** where more ideas and activities in West Norfolk over Christmas have been added.

[LILY | Search results](#)



Norwich Open Christmas

Join our Christmas Celebration

For anyone alone, homeless or in need

WHAT?
A free event for anyone to join
We provide food, entertainment and good company

WHEN?
Thursday 25 December
11am - 5pm

WHERE?
The King's Centre
King Street
Norwich
NR1 1PH

Scan the QR code for more information



Phone us: 01603 510751 (choose option 1)
Email us: enquiries@norwichopenchristmas.org.uk

Find out more at:
www.norwichopenchristmas.org.uk/guests

More below.....



Christmas Crown Trail

Launching on 20 November and running until 5 January, the Christmas Crown Trail will guide visitors across the city centre locating festive displays, searching out crowns and clues within creative shop window designs.

Click on the link below for more information.

[Christmas Crown Trail - Norwich BID](#)



Wellbeing Walks

October - December 2025



Norfolk and Waveney
Talking Therapies

Day	Meeting Point...	Time	Oct	Nov	Dec
Monday	North Walsham Market Cross, Market Place, NR28 9BS	10:30	6th	3rd	1st
	Fakenham Fakenham Library, Oak Street, NR21 9DY	10:30	13th	10th	8th
	Norwich City Hall Steps, St Peter's Street, NR2 1NH	10:30	13th	10th	8th
	Dereham St Nicholas Church, Church Street, NR19 1DN	10:30	20th	17th	15th
	Carlton Marshes Visitor Centre, Burnt Hill Lane, NR33 8HU	10:30	27th	24th	22nd
Tuesday	Diss Frenze Beck Nature Reserve, Sawmills Rd, IP22 4GG	10:30	7th	4th	2nd
	Sheringham *new time* Town Clock opposite Little Theatre, 2 Station Rd, NR26 8RE	10:30	14th	11th	9th
	Great Yarmouth *new day* Outside Munchies café, 2 North Drive, NR30 4ET	13:00	21st	18th	16th
	Thetford Outside The Light Cinema, Bridge Street, IP24 3AE	10:30	28th	25th	-
	Gorleston *new* By ice cream van, Marine Parade Car Park, NR31 6EZ	09:30	28th	25th	-
Wednesday	Swaffham Pathway next to Iceland, Market Place, PE37 7AQ	10:30	1st	5th	3rd
	Felbrigg Hall (Free Parking) Car Park Welcome Hut, Felbrigg Hall, NR11 8PP	10:30	15th	19th	17th
	Downham Market Town Hall Steps, Bridge Street/High Street, PE38 9DW	10:30	22nd	26th	-
Thursday	Waterloo Park Feed Café, Waterloo Park Pavilion, Angel Road, NR3 3HX	10:30	2nd	6th	4th
	Oulton Broad with Lowestoft PCN Banksy Artwork Platform, Nicholas Everitt's Park, NR33 9JR	14:00	2nd	6th	4th
	Beccles St Michael's Church Bell Tower, The Walk, NR34 9HE	10:30	9th	13th	11th
	Watton Behind Queens Hall, entrance to Kittell Close, IP25 6DD	10:30	16th	20th	18th
	Harleston *new time* 'Welcome to Harleston sign' to the left of Co-op, Bullock Fair Close, IP20 9AT	10:30	23rd	27th	-



Wellbeing Walks

October - December 2025



Norfolk and Waveney
Talking Therapies

Day	Meeting Point...	Time	Oct	Nov	Dec
Friday	Redwings Aylsham Spa Lane, Aylsham, NR11 6UE	10:30	3rd	7th	5th
	King's Lynn *new day* Behind the Customs House, Purfleet Quay, PE30 1HP	10:30	3rd	7th	5th
	Cromer Cromer Pier, Promenade, NR27 9HE	10:30	10th	14th	12th
	Wymondham Tiffey/Becketswell Car Park, NR18 9PH	10:30	17th	21st	19th
	Hoveton Hoveton Visitor Centre, Station Road, NR12 8UR	10:30	24th	28th	-
	Redwings Caldecott Visitor Centre, Beccles Road, Fritton, NR31 9EY	10:30	31st	28th	-



Please note, all our walks include a café visit and you are welcome to join us just for a cuppa if you don't fancy the walk! Please email us or visit our website for more details.

All of our socials are open to anyone 16+ with no need to book unless specified. Socials are very informal and you're welcome to stay for as long as you like.

Any queries please email us: cdcteam@norfolkandwaveneymind.org.uk

Website: www.nandwtalkingtherapies.org.uk





Norfolk and Waveney
Talking Therapies

Countywide Wellbeing Walks

Come and join our free walks across the County, connect with new people, breath in the fresh air and get back to nature!

All our walks are staffed by our Community Team and open to anyone aged 16+ with no need to book.

We always include a café visit and you are welcome to join us just for a cuppa if you don't fancy the walk!

Any enquiries please feel free to get in touch!

cdcteam@norfolkandwaveneymind.org.uk



for anxiety and depression



Wellbeing Community Events

October - December 2025



Norfolk and Waveney
Talking Therapies

Day	Location	Time	Oct	Nov	Dec
Monday	My Long-Term Health Condition and Me Social Group Louise Hamilton Centre, James Paget Hospital, Gorleston, NR31 6LA	14.00	13th	10th	8th
	Attleborough Social Attleborough Library, Ground Floor, Attleborough Community and Enterprise Centre, Church Street, NR17 2AH	13.00	27th	24th	22nd
Tuesday	Halesworth Café Catch Up Chinny's, 27 Norwich Rd, Halesworth IP19 8BX	12 noon	7th	4th	2nd
	Theatre Royal Café Social Theatre Royal, Theatre Street, Norwich, NR2 1RL	10.30	21st	18th	16th
Wednesday	Norwich Evening Social Marzanos, The Forum, NR2 1TF	17.00	22nd	26th	-
Thursday	Dungeons & Dragons One Shot *booking required* Athena Games, 9 St Gregory's Alley, Norwich, NR2 1ER	18.00	2nd	6th	4th
	Writing and Making Workshop The Annex, Holland Court, Cathedral Close, NR1 4DY	13:30	16th	20th	18th
Friday	Norwich Café Social Merchant's House, Fye Bridge St, NR3 1LJ	10:30	10th	14th	12th

All of our socials are open to anyone 16+ with no need to book unless specified, which can be done on the email below. Socials are very informal and you're welcome to stay for as long as you like.

Any queries please email us: cdcteam@norfolkandwaveneymind.org.uk

Website: www.nandwtalkingtherapies.org.uk

Warm Space Finder

Click on the link below and add your location to find any places offering a warm space

<https://warm.open-innovations.org/find?gss=E07000146>

It isn't always accurate, but it's the best one recommended!

Stay warm in Dereham

A timetable of warm places in town - 2025/26

PAGE 1 OF 2

Made by
 Love
Dereham

Love Dereham - Let's Chat companionship group

Inside Green Pastures Bookshop, 20 Norwich Street.

Stop in to "Let's Chat" for company and conversation with friendly people. Free hot drinks/cuppa soups and biscuits. Free Wi-Fi. Mon-Fri 9:30-11am.

Closed weekends, bank holidays and every 2nd Tuesday.



Love Dereham - Community Fridge



Inside Green Pastures Bookshop, 20 Norwich Street.

Doors open 9:30am, fridge access 10am to 1pm. Get free food in the form of surplus goods from local shops and businesses. No referral or paperwork, just come in and see what you can make use of.



Check facebook.com/derehamcommunityfridge for seasonal closures. Closed weekends, bank holidays and every 2nd Tuesday.



The Salvation Army



Tuesdays from 9:30am to 1:30pm: a warm environment for friendship, games and other activities, free hot drinks, free lunch served at Midday.

Fridays from 8:45am to 11am: Charity Shop open & coffee morning with free hot drinks for those in need. Find them at 3 St Nicholas Street.



Baptist Church - Coffee Morning



The Coffee Shop is open on a Friday from 10am to 1pm. Come and be warm & with friendly people. Free Wi-Fi. Homemade cakes, light-bites and drinks available for a small cost. No purchase necessary to come in and get warm and use the facilities. Enter either from High Street (next to The Bull), or via the garden entrance (near GD).



Dereham Cancer Care



Mon, Tues, Thurs, Fri: 10am to 2pm. Free drinks & biscuits (donations welcome if able). Puzzles, chit chat, crafting etc. Free talks on various topics that are open to all. It's a welcoming centre, open for everyone.

Located in Baldings Yard, Cowper Road.

Men's Shed: Wednesday afternoons - men's shed social inside DCC.

Stay warm in Dereham

A timetable of warm places in town - 2025/26

PAGE 2 OF 2

Made by
Love
Dereham



Dereham Aid Centre



This venue is open to everyone regardless of nationality. Opening times are Wed: 10am-2pm and Fri: 10am-3pm. Hang out in this friendly warm space on Wrights Walk - free hot drinks, hot food & child's play area.

Dereham Men's Network - A space for men to chat, connect and unwind. Meets in the aid centre on Friday's from 11am-1pm.

Silver Circle - Social group for over 60's. Meeting on alternate Thursdays from 10.30am in the Aid Centre. Not open to the public during this time.



Dereham Library



The library is a warm place open: 9:30am to 7pm Mon-Fri and 9:30am to 4pm on Sat. Closed Sun. Free hot drinks station open Mon-Fri: 10am-1pm. Free 'Warm and Well' supplies available, while stocks last.

Just a Cuppa - Tuesday 10:30am till 12 noon

Dereham Community Crafters - Wednesday 1pm to 3pm

Bereavement Cafe - Thursday 11:30am to 1pm

Knit and Natter - Friday 10am to 12 noon

Board Games Group - Saturday 1:30pm to 3:30pm



The Meeting Point



Mon to Fri from 9am to 4pm (3pm on Thursdays). A place for the over 55's and adults with learning difficulties to meet and socialise. Tea, coffee and snacks from the serving hatch are available throughout the day for a small charge. Lunch: £8, 2 courses + tea/coffee. Pre-booking essential.

Sacred Heart & St Mary Margaret Catholic Church



Free winter soup lunch - Every Monday from 12pm - 2pm. No booking required. Find them at 35 London Road, NR19 1AS

This timetable has been produced by Love Dereham www.lovedereham.org.uk

Love
Dereham

Toasty Toes-Slipper Gifting at Norfolk Libraries

Please check on the library's events website.

Yarmouth

Wednesday 10th December 10am-1pm

Hellesdon

17th December 10.30-1.30

Toasty Toes



Advice and information for older people about keeping warm and well this winter

Plus, collect a brand new pair of slippers to help reduce trips and falls

December		
Yarmouth Library	Wednesday 10 th December	10 am – 1 pm
Hellesdon Library	Wednesday 17 th December	10:30 am – 1:30pm

January		
Dereham Library	Wednesday 7 th January	10 am – 2 pm
Attleborough Library	Wednesday 14 th January	10:30 am – 12:30pm
Earlham Library	Wednesday 14 th January	1 – 3 pm
Swaffham Library	Thursday 15 th January	11 am – 1 pm
Diss Library	Thursday 15 th January	10:30 am – 12:30pm
Downham Market Library	Friday 16 th January	11 am – 2 pm
Tuckwood Library	Friday 16 th January	11am – 1pm
Long Stratton Library	Monday 19 th January	1:30 – 1:30 pm
Wroxham Library	Thursday 22 nd January	11 am – 1 pm

 Norfolk County Council

Further dates for January 2026 added in our **January Diary dates**

Please click on our “Where you will find Age UK Norfolk” link on our website to find ones we will be at . There will be other supporting charities and agencies at the other locations too.



In North Walsham and 16 other branches across Norfolk....

Click, Save, Spend: free support with online banking, budgeting and shopping

Starting in November, libraries across the county will offer Click, Save, Spend – a brand new service designed to help build confidence with managing money online.

Whether you're new to mobile banking or want to feel more secure shopping online, our friendly team is here to help. Through free, in-person, one-to-one support sessions, you can learn how to:

Navigate online banking

Use digital tools to budget and find savings

Shop or make payments online

Stay safe with online security tips

Available at select branches (17, across all areas of Norfolk). Book your session by emailing libraries.iconnect@norfolk.gov.uk or calling 01603774777.

This service is made possible by the Household Support Fund and will run until the end of March 2026.

Mobile library service

This link provides a map for which areas are covered by our mobile routes:

<https://experience.arcgis.com/experience/33a1d0e0f79d4808ba2b0a6f588668d7>

You can explore specific stop information on this page:

<https://www.norfolk.gov.uk/mobilelibraries>

Home, residential and sheltered library service

The home library service provides books on wheels to the homes of people who like to use the library service but are unable to get to a branch or mobile library due to age, disability or mobility.

<https://www.norfolk.gov.uk/article/40134/Home-residential-and-sheltered-library-service>

You can also refer to this service via NCAN.

<https://ncan.co.uk/listing/home-library-service/>

Learn a new skill

Browse or search our current courses on the Adult Learning website and enrol online

[Adult learning courses - Norfolk County Council](#)

New courses starting Jan 2026

Lunch club

Hi Ladies

You maybe starting to wonder what you can do, now that the nights are getting darker?

Well, The Horning and District Ladies Lunch Club, are pleased to announce that we will be returning on the 28th October, following our summer break.

It's a great way to meet new people, and, we also enjoy a delicious 2 course meal, followed by tea or coffee.

There is also different guest speaker every month.

As the names suggests, it is a daytime gathering, so, the added bonus, is that you will be home before it starts getting dark.

We meet at the Old Rectory Hotel in Crostwick, on the 4th Tuesday of every month.

For more information, please contact Tricia Elson on, 07931 301606, or email her at, ladieslunchclub@btinternet.com

We look forward to welcoming you.

Pilates Classes

3 great classes for older people.

Worstead

Thursdays 4.30pm

Standing and Sitting Pilates.

East Ruston

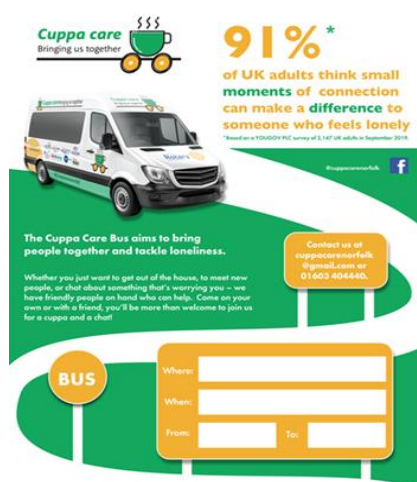
Fridays 2.45 pm

Gentle Mat Pilates.

Neatishead
Mondays 3 pm
Gentle Mat Pilates

From Boo Williams
07717473600

Cuppa care- timetable of visits across Norfolk



Our Cuppa Care funders



We are here for you

Whether you just want to get out of the house, meet new people, chat about something that's worrying you or get information and advice – we have friendly people on board our Cuppa Care bus who can help.

[Cuppa Care - Hear For Norfolk](#)

Timetable below and check website link above.

Acle Recreation Centre Car Park, Bridewell Lane, Acle, NR13 3RA 10am - 12pm Monday 15th Dec

Aldborough Community Centre, The Green, Aldborough, NR11 7AA 10am - 12pm Tuesday 2nd Dec

Aylsham - Outside Aylsham Town Hall, NR11 6EL 1pm - 3pm Wednesday 10th Dec

Aylsham - Bure Valley House, Station Road, Norwich, NR11 6HU 1pm - 3pm Monday 8th Dec

Blakeney- Glaven Centre, Thistleton Court, Blakeney, Holt, NR25 7PH 1pm - 3pm Tuesday 23rd Dec

Cromer- Ashdown Court, Cliff Avenue, Cromer, NR27 0AE 1pm - 3pm Tuesday 2nd Dec

Dereham Shopping Centre, Wright's Walk, Dereham, NR19 1TR 1pm - 3pm Wednesday 17th Dec

Diss Market Square, Outside the Post Office, IP22 4AN 10am - 12pm Monday 1st Dec

Fakenham War Memorial, Market Place, Fakenham 10am - 12pm Tuesday 23rd Dec

Great Yarmouth- The Market Place, Great Yarmouth, NR30 2BA 1pm - 3pm
Monday 15th Dec

Harleston Coop Car Park, Bullock Fair Close, IP20 9AT 1pm - 3pm Monday
1st Dec

Hingham- Marketplace, Hingham, NR9 4AF 10am - 12pm Wednesday 3rd
Dec

Hoveton & Wroxham Medical Centre, Stalham Road, NR12 8DU 1pm - 3pm
Wednesday 24th Dec

Holt- The Venue, Kerridge Way, Holt NR25 6DW 10am - 12pm Monday 8th
Dec

Loddon- Church Plain Car Park, NR14 6LX 10am - 12pm Tuesday 9th Dec

Long Stratton Leisure Centre, Swan Lane, NR15 2UY 1pm - 3pm Tuesday
9th Dec

Ludham Village Hall Car Park, Norwich Road, Ludham, Great Yarmouth,
NR29 5PB 1pm - 3pm Thursday 18th Dec

Mattishall- Bob Carter Court, Mattishall, NR20 3RU 1pm - 3pm Wednesday
3rd Dec

Northrepps Village Hall, 4 School Close, Northrepps, Cromer, NR27 0LB
10am - 12pm Wednesday 10th Dec

North Walsham- Vicarage Street Car Park, North Walsham, NR28 9DQ
10am - 12pm Tuesday 16th Dec

Norwich- The Forum, Millenium Plain, Norwich, NR2 1TF 10am - 3pm
Thursday 11th Dec

Norwich- Orbit Housing, St Annes Quarter, St Annes Lane, Kings Street,
Norwich, NR1 1QE 10am - 2pm Thursday 4th Dec

Reepham- Stimpsons Piece Pavillion, Bartle Court, Reepham, NR10 4LL
10am - 12pm Wednesday 24th Dec

Sheringham Station Approach Car Park, Station Road, Sheringham, NR26
8RG 1pm - 3pm Tuesday 16th Dec

Stalham -Staithe Surgery Car Park, NR12 9BU 10am - 12pm Thursday 18th
Dec

Swaffham War Memorial, Lynn Street, Swaffham 1pm - 3pm Friday 19th
Dec

Thetford Market Place, IP24 2DS 10am - 12pm Friday 19th Dec

Watton- Queens Hall, Norwich Road, Watton, IP25 6DA 10am - 12pm
Wednesday 17th Dec

Creative Arts East Events

Stitching Workshops with Cloth of Kindness

In November and December all our groups will be joined by local textile artists Cloth of Kindness for fun stitching workshops exploring the theme of belonging - whether it's a place, a person, or a pastime that makes you feel at home.

No sewing experience is needed - all skills will be taught during the session. Your individual patches will then be joined to create a collaborative quilt!

Breckland

St Mary's Church, Attleborough- Thursday 11th December 1pm

Thetford Methodist Church- Friday 12th December 1pm

Trinity Methodist Church, Dereham- Friday 19th December 1pm

West Norfolk

Hunstanton Community Centre-Monday 8th December 1pm

Great Massingham Village Hall- Wednesday 17th December 1pm

London Road Methodist Church, King's Lynn- Wednesday 16th December 1pm

More events will be added....

If you want to come along to any of the above events provided by Creative Arts East-

To book your place for any event, please book online via TicketSource (<https://www.ticketsource.co.uk/creative-arts-east>) , call us on 01953 713390 or email info@creativearts-east.co.uk (<mailto:info@creativeartseast.co.uk>) to secure your place.

We are using a 'Pay What You Can' pricing structure, to help us to continue these workshops. All funds we raise will contribute towards providing excellent high-quality arts sessions like these.

Creative Socials are monthly creative workshops for people aged 50+. Activities change month-to-month and range from dancing and music, to arts, crafts and creative writing.

A welcoming and inclusive group for anyone who wants to try something new, make new connections and have a cup of tea and a slice of cake! Our social runs from 1-3pm.

Click here to book now (<https://www.ticketsource.co.uk/creative-arts-east>)

What's happening at Merchant's Place, Cromer

Merchants' Place Opening Hours:

Office Hours:

Monday – Friday, 8:30am – 5pm

Community Fridge and Larder Hours:.....

Monday – Thursday, 9:30am – 3pm

Life begins at... Friendship group. A friendship group for older people. Thursday afternoons 1pm to 3pm here at Merchants' Place. Why not come along and join the group for a friendly chat and a cuppa?. For more information call 01263 519454 or email info@merchantsplace.co.uk.

Coffee, Cake & Company takes place here every Tuesday between 10am to 12noon here at Merchants' Place. If you would like to socialise in a safe, friendly space then join us for coffee/tea, cake and company.

We would love to see you, everyone welcome! We just ask for a £2 donation to contribute towards refreshments.

Lloyds Community Banker is at Merchants' Place every Tuesday from 9am to 3pm. Offering banking support – no cash transactions.

Other information and new courses at Merchants Place 16 Church Street

Cromer NR27 9ES

call in at our Reception at 16 Church Street, Cromer NR27 9ES

call- 01263 519454

website- <https://merchantsplace.co.uk/>

more below.....



DEMENTIA CAFÉ

Location: The Reef Leisure Centre, (Sheringham)
Time: Starting Friday 3rd October, 10am Cost: Free

A welcoming and supportive environment designed for people living with dementia and their caregivers. It serves as a safe, relaxed space where individuals can socialise, share experiences, and access information in a non-clinical setting.

The café typically offers activities tailored to engage those with dementia, such as arts and crafts, music, or simple games, which can help stimulate cognitive function and provide a sense of community.

To book your place please call **01263 825 675** or scan the QR code.



everyoneactive.com



Betty's Club

Burnham Market

Looking for volunteers, members and supporters

We have created it especially for local older people and their family carers in the community who have dementia or cognitive decline.

Here are links to our website and Facebook pages:

www.bettysclub.com

<https://www.facebook.com/profile.php?id=61576631575779>

Come Singing For People Of All Ages With Memory Loss

Come Singing at Millenium Library

Tuesdays:

2nd and 4th Tuesday of the month 10.45 – 11.45

The Norfolk and Norwich Millennium Library

The Forum

Norwich

Phone 01603 774774

Come Singing at Earlham Library

Fridays:

3rd Friday in each month 11.15 – 12.15

Earlham Library,

Colman Road,

Norwich, NR4 7HG.

01603 454338

If you are interested in starting up a singing group in your area please
contact us at info@comesinging.org.uk

All sessions are free for people living with dementia and their carers.

<https://www.comesinging.org.uk/>

COME SINGING BY PHONE

for more information, please phone Heather on 01603 452404

Dementia Clubs around the county

Bradwell

Forget-me-nots. First Monday of the month. 10am to 12noon

St Nicholas Church Hall, Bradwell Gt Yarmouth NR31 8QQ

Contact- 07580 005723 (Leslie)

Brundall

Forget-me-nots. Tuesdays and Thursdays weekly. 10am to 12noon

The Hub, St Laurence Church, Church Lane, Brundall NR13 5NA

Contact- 01603 715136

Catton

Reminiscence Group. Second Monday of the month. 1.30pm to 3.30pm

Christ Church, Magdalen Road NR3 4LA

Contact- 01603 496333

Congham

Dementia Friendly Pub Lunches. Second Wednesday of the month. 12noon to 2pm

The Anvil Inn, Congham PE32 1DU

Contact- www.anvilcongham.co.uk

Costessey

Dementia Friendly Café. Second Thursday of the month. 10am to 12 noon

The Costessey Centre, Longwater Lane, Norwich, NR12 7EP

Contact- 01603 742958

Cringleford

Memory Lane. Third Wednesday of the month. 2.15-4.15pm

St Peter's Church Hall, Newmarket Road, Cringleford, NR4 6UE.

Contact- samantha.woods@careuk.com

Cringleford

Advice and Support. Third Tuesday of the month. 1.30pm to 3.30pm

Cavell Court , Dragonfly Lane, Cringleford Norwich NR4 7SW

Contact- 01603 859918

Diss

Dove Dementia Café. First Wednesdays of the month. 10am to 1pm

Diss United Reformed Church, Mere Street, Diss, IP22 4AD

Contact- [Diss United Reformed Church | Calendar of events](#)

Diss

Pabulum Café. Second Wednesday of the month. 10am to 12noon

Denny Centre, Thomas Manning Road, Diss IP22 4HL

Contact- 01603 785228.

Downham Market

Dementia Café. Fourth Monday of the month. 10am to 12noon

Downham Market Methodist Church, Paradise Road, PE36 9JE

Contact- [Downham Market Methodist Church | Facebook](#)

Gorleston

Memory Café. Wednesdays weekly. 2pm to 3pm

Methodist Church Hall, Magdalen Way, Gorleston on Sea, NR31 7DB

Contact- 07766 411094 <https://gygmemoryclub.co.uk/>

Hellesdon

Hellesdon Library. Last Friday of the month. 10.30am to 12.30pm

Hellesdon Library, Woodview Road, Hellesdon, NR6 5QB

Contact- 01603 427790 [Hellesdon Library | Hellesdon | Facebook](#)

Holt

Poppy Café. Tuesdays weekly. 10.30am to 12.30pm

Meeting Room, St Andrews Church, Holt NR25 6BB

Contact- <https://www.holtdementiasupport.org.uk/poppy-cafe>

Horsford

Duncan's Club Reminiscence. Thursdays weekly, 2 sessions-

10am to 11.30am and 12noon to 1.30pm

The Nest, Horsford, Norwich NR10 3AQ

Contact- [Duncan's Club](#)

Hoveton

'Making Connections' Dementia Café. Last Tuesday of the month

10am to 12noon

Hoveton Village Hall, Stalham Road, Hoveton NR12 8DU.

Contact- 07513 183769 [Making Connections - Hoveton & Wroxham | Facebook](#)

King's Lynn

Dementia Café. Third Friday of the month. 10am to 12noon

Amberley Hall Care Home 55 Baldock Drive Kings Lynn PE30 3DQ

Contact- 07548 774925

Little Plumstead

Walled Garden Dementia Café. Last Monday of the month. 10am to 12noon.

Old Hall Road, Little Plumstead, NR13 5FA

Contact- 01603 559242 <https://www.facebook.com/thewalledgardenshop>

North Walsham

‘Cameo Café’ Dementia Café. Tuesdays and Thursdays 10am to 3pm

Furse Hill, Resource Centre, 73 Happisburgh Road, NR28 9HD

Contact- 01692 502608 <https://www.facebook.com/CameoCafe1>

Norwich

Puzzle and Cake. 1st Monday of the month. 10.30am to 12.30pm

The Boundary Pub, 414 Aylsham Road, Norwich, NR3 2SA

Contact- <https://www.facebook.com/norwichboundary/>

Sunshine Café. 1st Thursday of the month. 10am to 12noon

Salvation Army, 24 Boundary Rd, Norwich NR6 5HT

Contact- 01603 402703

<https://carersmatternorfolk.org.uk/groups/norwich/sunshine-dementia-cafe/>

Dementia and Cancer Support Group- 1st Friday of the month 10am to 12

Priscella Bacon Hospice Century Place, Norwich NR4 7YA

Contact- 01603 776600 pbl@nchc.nhs.uk

Old Catton

Pabulum Café. Third Wednesday of the month. 10.30am to 12.30pm

St Margaret's Church Hall, Blacksmiths Way, Old Catton, NR6 7DN

Contact- 01603 785228

Rackheath

Dementia support group. Third Thursday in the month 10am to 12noon

Ashfields Care Home, 31 Salhouse Road, Rackheath NR13 6PD

Contact- 01603 721720 ashfields@barchester.com

Scratby

Memory Café. Mondays weekly 10am to 2pm

All Saints Parish Hall, Beach Road, Scratby, NR29 3AJ

Contact- 07799 377520 <https://gygmemoryclub.co.uk/>

Sprowston

Sprowston Dementia Friendly Café. Third Thursday of the month 10am to 12 noon

Diamond Centre, School Road, School Lane, Sprowston, NR7 8TR

Contact- 07554 117164 Sprowstondfc@gmail.com

<https://www.facebook.com/SprowstonDFC>

Thetford

Thetford and District Dementia Support. Fridays weekly 10am to 1pm

Cloverfields Community Church Yarrow Cl, Thetford IP24 2TZ

Contact- 07542 866519 taddsgroup@hotmail.com

Thorpe St Andrew

Thorpe Dementia Café. 1st and 3rd Wednesdays of the month 10am to 12

68 Yarmouth Road, Thorpe, Norwich, NR7 0QZ

Contact- 01603 701048 <https://www.facebook.com/ThorpeDementiaCafe>

Wymondham

Pabulum Café. Mondays and Fridays weekly 10am to 12noon(not Bank Holidays

Fairland Church Centre Fairland Hill Wymondham NR18 0AW

Contact- 07391 659057 or 07586 312809

<https://www.wymondham-dementia-support-group.org.uk>





Pitstop- Aylsham

Pit Stops cover a variety of interests and activities ranging from board games, creative arts, walks to fishing. We're keen to hear what you'd like to do too.

**For details of Pit Stops and activities in Aylsham find events at
menscraft.org.uk/events/**

Aylsham

Fridays 1-3pm

The Drill Hall, Cawston Road, Aylsham

NR11 6EB

For further details contact: Karl Read

07512 656864

Karl@menscraft.org.uk

Coffee Mornings

Cake...& Company at St Alban's, Norwich

You are INVITED to come along ...If you enjoy-Why not Bring a Friend ! FREE !

Most TUESDAY mornings ... 10.30 – 12.00

St Albans Church, Grove Walk – Side Entrance in Eleanor Road

For details ... please call 0777 333 04 05

Supported by EAST CHURCH

Companionship Cafes

(Run by Home Instead at -)

Thorpe Companionship Café

When: 1st Thursday of each month

Where: St Williams Way Library, NR7 0AJ

Earlham Companionship Café

When: 3rd Thursday of each month

Where: Earlham Library, NR4 7HG

Hellesdon Companionship Café

When: 2nd Friday of each month

Where: Hellesdon Library, NR6 5QB

**Attendance is free, and no booking is required. For more details,
contact:**

Email: hannah.begley@homeinstead.co.uk

More below....

Norfolk Library Service Bereavement Cafés



**Informal friendship groups for bereaved adults
run by Norfolk Library Service.**

**A space to support each other and find
information about other services.**

Taking place at the following libraries;

**Aylsham, Caister, Costessey, Cromer, Dereham,
Dersingham, Downham Market, Gaywood,
Gorleston, Great Yarmouth, Holt, Hunstanton,
Kings Lynn, Martham, Mundesley, North Walsham,
Sheringham, Sprowston, Taverham**

For further details about dates and times please visit our
website to view our “What’s On” page.

www.norfolk.gov.uk/libraries

Email us on **libraries.iconnect@norfolk.gov.uk**

Or phone **01603 774777**

(Last updated March 2025)

borrow discover connect



Norfolk County Council

Thinking about trying a new activity?

Explore Norfolk County Council’s Adult Learning

For courses in person and online

[Adult Learning Course List](#)

More at your local library

Most libraries have groups and activity programmes. Check on the website below for what's on offer at your local library-

<https://www.norfolk.gov.uk/branchlibraries>

Click on your nearest in the list and scroll down the information about the library to find out about activities and events coming up.

Support at Stalham Baptist Church

Stalham Baptist Church has opened a Memories café in its refurbished School Room.

It is open on the last Monday of the month 10am to 12 Noon.

It aims to provide a welcoming social space where people with memory loss, and their carers, can gather to have a cuppa, enjoy a range of activities, make new friends and enhance their quality of life.

This provides an opportunity to meet others who face similar problems. Activities include games, music, jigsaws, painting, knitting, and baking. There are also “memory books” which can prompt those attending to reminisce.

Other groups at the Church include an over 55's group, a bereavement support group and warm space.

Click on the link below to find the calendar of groups and activities.

<https://www.stalhambaptist.org.uk/diary.php>

Priscilla Bacon Lodge Knit and Natter Group

Starting on 4th June 2025, our new Knit and Natter Group will take place on the first Wednesday of every month from 10:30am – 12:30pm, at [The Friends Café](#) inside Priscilla Bacon Lodge.

If you'd like to support our Comfort Blankets project whilst attending the group, we'd be thrilled to have your help. You're also very welcome to bring along your own knitting or crocheting projects.

There is no need to sign up, please just come along and join us for a cuppa and some friendly conversation. We look forward to seeing you!

Or join in at home with the Comfort Blankets Project- download the pack for instructions-

Information is on the website-

[Comfort Blankets - Priscilla Bacon Hospice Charity](#)



A dementia friendly golf group at
Dereham Golf Club,

75b Quebec Road, Dereham, Norfolk NR19 2DS.

Each person will be accompanied by an experienced golf volunteer.

Every third Thursday of the month between 2-4pm

Refreshments will be provided.

To book a place free of charge, or for further information please call:

Stuart Goodman at Dereham Golf Club on 01362 695900

or Sarah Wicks on 07833 107582

Email: foregetmenotgolf@derehamgolfclub.co.uk

Dates for 2025:

<i>16th January</i>	<i>20th February</i>	<i>20th March</i>	<i>17th April</i>	<i>15th May</i>
<i>19th June</i>	<i>17th July</i>	<i>21st August</i>	<i>18th September</i>	
<i>16th October</i>	<i>20th November</i>	<i>18th December</i>		

Registered Charity Number: 1212148

derehamgolfclub.co.uk

The Bridge For Heroes

The Bridge for Heroes – a small charity with a big heart, supporting the Armed Forces community of West Norfolk and beyond.

We run a Drop-In centre on South Clough Lane, King's Lynn, and our doors are open from 10am until 4pm Monday to Friday, and from 10am until 2pm on Saturdays. We provide hot and cold drinks, home-cooked lunches, with a warm welcome and friendly conversation.

If you are a veteran or serving member of HM Forces, full-time or reserve, you are welcome to access our services. If you are the spouse, widow/er, parent, child or carer of someone who has served or is serving, we are here for you too. And we don't want to forget families separated through divorce or relationship breakdown. We do everything we can to assess need on a case-by-case basis, and it all starts with a brew and a chat!

Find us at 52A South Clough Lane, King's Lynn PE30 1SE and online at www.thebridgeforheroes.org.

Call the team on 01553 760 230 or email contact@thebridgeforheroes.org.

Facebook and Instagram @thebridgeforheroes.

Online exercise classes

Weekly online exercise classes provided by EPIC Norfolk(Exercising People in Communities)

See below.....

They are free to attend and suitable for anybody. The exercises can be done seated or standing.

More information (<https://epicnorfolk.com/live-zoom-classes/>)

See classes below-

Monday – Over-50's Exercise

Time: 10-10.45am

Join Zoom Meeting

<https://us06web.zoom.us/j/93137401336?pwd=N0dJTzllWDFvL1ZjY1ZhdmFVZnE2Zz09>

Meeting ID: 931 3740 1336

Passcode: 397104

Thursday – Over 50's Exercise

Time: 3-3.45pm

Join Zoom Meeting

<https://us06web.zoom.us/j/95879993009?pwd=U2xxQlYxdGcvVFVoSk53eEowYXk1dz09>

Meeting ID: 958 7999 3009

Passcode: 810993

Move it or Lose it Exercise Classes with Jo

Exercise classes for the over 50's

MONDAY - 10am - **Fakenham** Gallow Sports Centre (on Racecourse site), Hempton Rd, Fakenham NR21 7NY.

12 OR 1pm (2 classes back -to -back) **Swaffham** Assembly Rooms, 1 Market Place, Swaffham PE37 7AB.

TUESDAY - 10 OR 11am (2 classes back- to- back) **Swanton Morley** Village Hall, Manns Lane, Swanton Morley NR20 4NP. Refreshments available.

WEDNESDAY - 10 OR 11.30am (2 classes) **Bawdeswell** Village Hall, Reephams Rd, Bawdeswell NR20 4 RU. Refreshments available.

THURSDAY - 11am **Swaffham** Assembly Rooms, 1 Market Place, Swaffham PE37 7AB

1.15pm **Fakenham** Community Centre, Oak Street, NR 21 9SR.

FRIDAY - 9.45am **Thornham** Village Hall, High St, Thornham PE36 6LX.

Contact Jo Farnworth

07941086603

jo.farnworth@moveitorloseit.co.uk



The advertisement features a banner with three photos of people exercising. The first photo shows a woman on a stationary bike. The second photo shows a man on a rowing machine. The third photo shows a man on a rowing machine. The banner includes the text 'fit20' in large green letters, 'Fit in 20 minutes per week' in smaller green letters, and 'changed by fit20' in a green speech bubble. Below the banner, there is a blue banner with the text 'Make time for your fitness'. The main text reads 'fit20 Hellesdon' and 'Fit in 20 minutes per week'. Below this, there is a paragraph of text: 'At fit20 you train once a week for 20 minutes with a personal trainer. Our training method is based on the latest scientific findings about effective and efficient training to improve fitness and health. You book your weekly session ahead of time to stay on track. We guarantee measurable results within a few sessions, and more importantly, you will feel stronger and fitter.' Below the paragraph, there is a green box with the text 'FREE 1st Training Session'. At the bottom left, there is contact information: '105 Reephams Rd, Norwich NR6 5AB, 07943 802071, freetry.co.uk'. At the bottom right, there is the 'fit20' logo with the tagline 'Fit in 20 minutes per week'.

fit20
Fit in 20 minutes per week

changed by fit20

Make time for your fitness

fit20 Hellesdon
Fit in 20 minutes per week

At fit20 you train once a week for 20 minutes with a personal trainer. Our training method is based on the latest scientific findings about effective and efficient training to improve fitness and health. You book your weekly session ahead of time to stay on track. We guarantee measurable results within a few sessions, and more importantly, you will feel stronger and fitter.

105 Reephams Rd
Norwich NR6 5AB
07943 802071
freetry.co.uk

FREE
1st Training Session

fit20
Fit in 20 minutes per week

Compassionate Friends Skills Workshops

8th Dec 2025 10am to 12.30pm at Later Life Care (next to Tesco), Cromer Road, Sheringham, NR26 8RS

(On Zoom workshop available 12th Jan 2026- see below..)



Scan to sign up to our workshop



Let's talk about death and dying - discover how to be a Compassionate Friend...

You can be a Compassionate Friend?

We all know people who are going through a difficult time due to ill-health, care-giving, loss or bereavement. We often want to offer support, but don't always have the words or know how we can help. Becoming a compassionate friend will help to build the skills and confidence needed.

Our workshops cover:

- Understanding what a compassionate community is
- Dispelling myths and taboos about death and dying
- Communication skills and how to use them effectively
- Practical ways you can support or the offer of a friendly ear to make a difference

Sign up to our free Compassionate Friends Skills Workshop here:
www.tappinghouse.org.uk/compassionate-communities/
or call 01485 601700

END OF December DATES FOR NOW