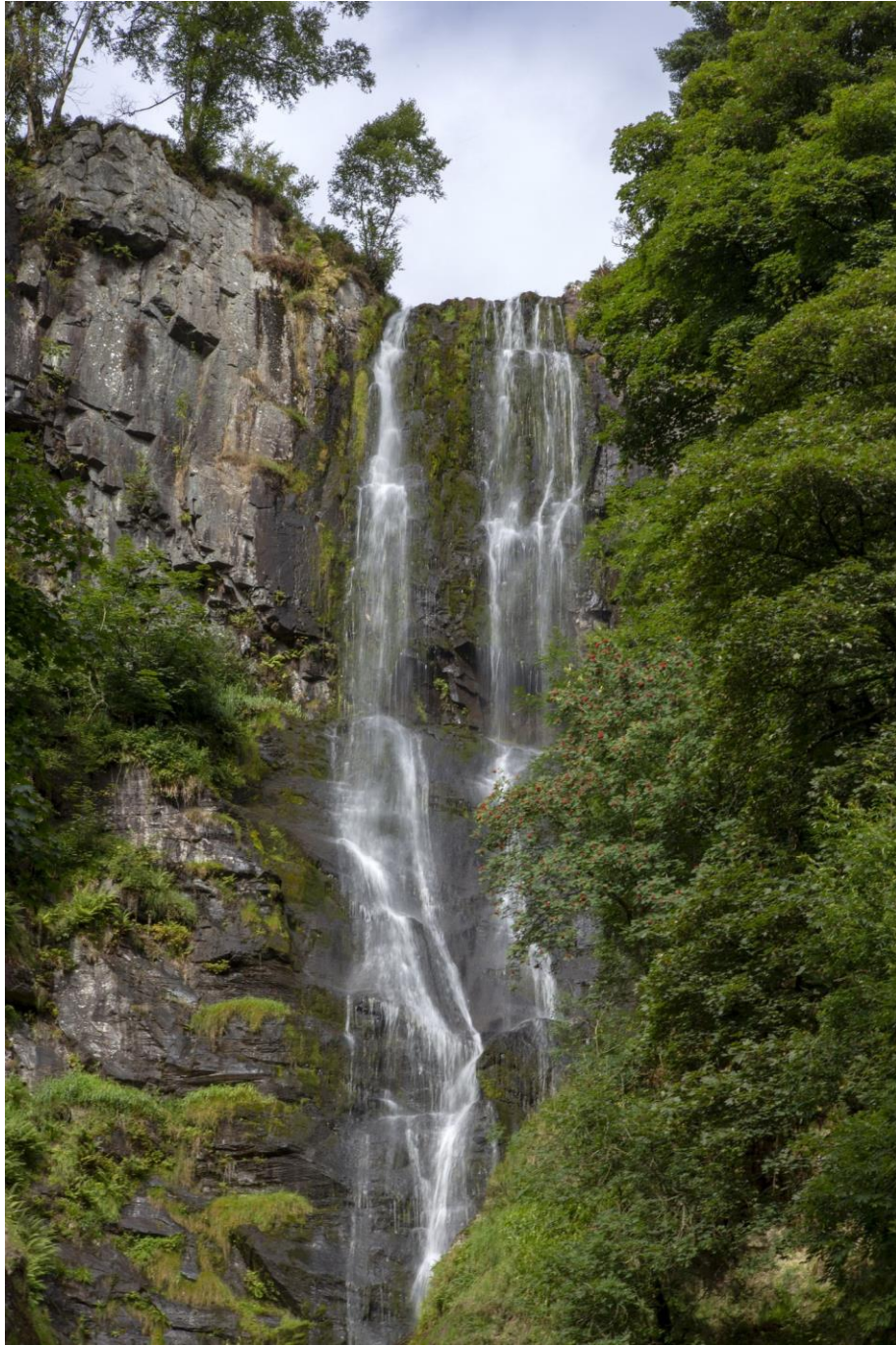


My dearest watercolourist,

I hope you're doing well, today we are going to look at this composition from a couple of weeks ago.

I am sorry for the delay in sending this tutorial. Nonetheless, I still hope you're going to enjoy it.

This is a waterfall painting. Below I attached an inspiration image





We start with sketching the composition. Vertically there are three sections- the rocky wall to the left, the waterfall in the centre and a big green tree to the right.

We use very water-down grey for sketching the rocks. We use a very thin brush and very thin lines.

The large tree on the right-hand side of the painting is created using different layers. We started a very thin layer of green on which we build more texture after this first layer is dry.



Next, we changed our brush for the biggest one we own, and we apply the sky.

Our aim for this composition is to have the waterfall as the brightest colour possible. Do this, we are going to have to paint the sky perhaps a little bit blue were than we might have otherwise.

To the left, we add a couple of brush strokes of grey (we mix blue, purple, and brown for this grey).

On the left-hand side of the painting, the rock wall is closer to us, so it creates a shadow across the midsection which actually goes further back into the distance. We take this opportunity to add a shadow.

Over to the central area of the composition, the rock wall needs to have a couple of steps or levels. We want the waterfall to come down a couple of different heights and volumes. To render that, in this painting, we sketched diagonal curved lines, just as demonstrated in the image.

Why not add some tree shadows to the top left of the painting?

Time to introduce the waterfall itself.

We are trying to keep the water as white as possible so we can suggest the fast-falling water down the rock wall.

I used my smallest and narrowest brush to create little veins that are the outline of the waterfall. I branched out the waterfall here and there, suggesting that rocks were breaking the flow of the water down the wall. To render the outline of the waterfall I used the grey I mentioned previously (blue purple, brown) but this time I mixed a little bit more blue in it.

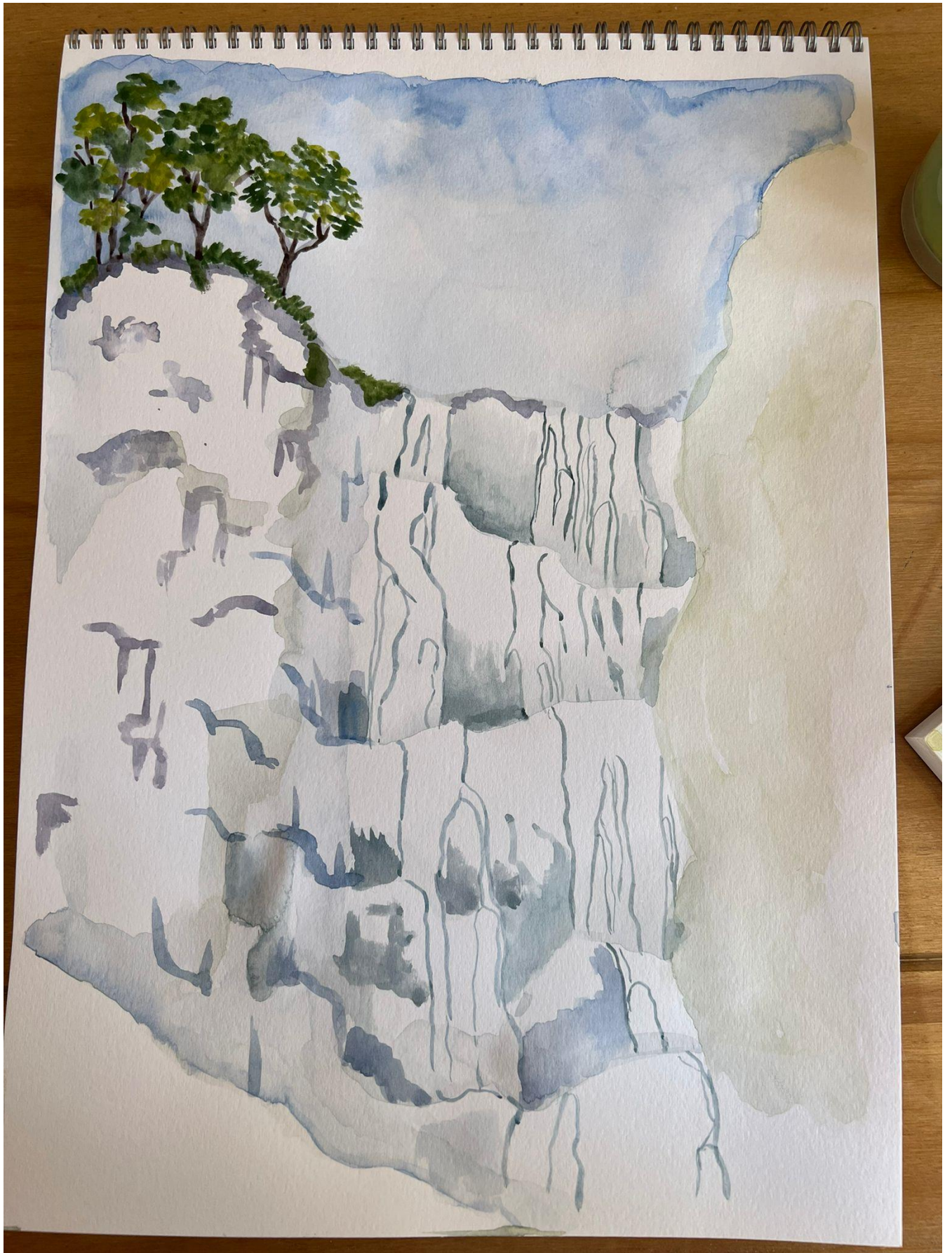


I repeated the step again to the right and added a second stream of water.

To create more depth and volume, we needed shadows, we emphasised the difference in height using watered-down grey.



As the sky dried, we added leaves to the top trees. We used a dotting technique for this.

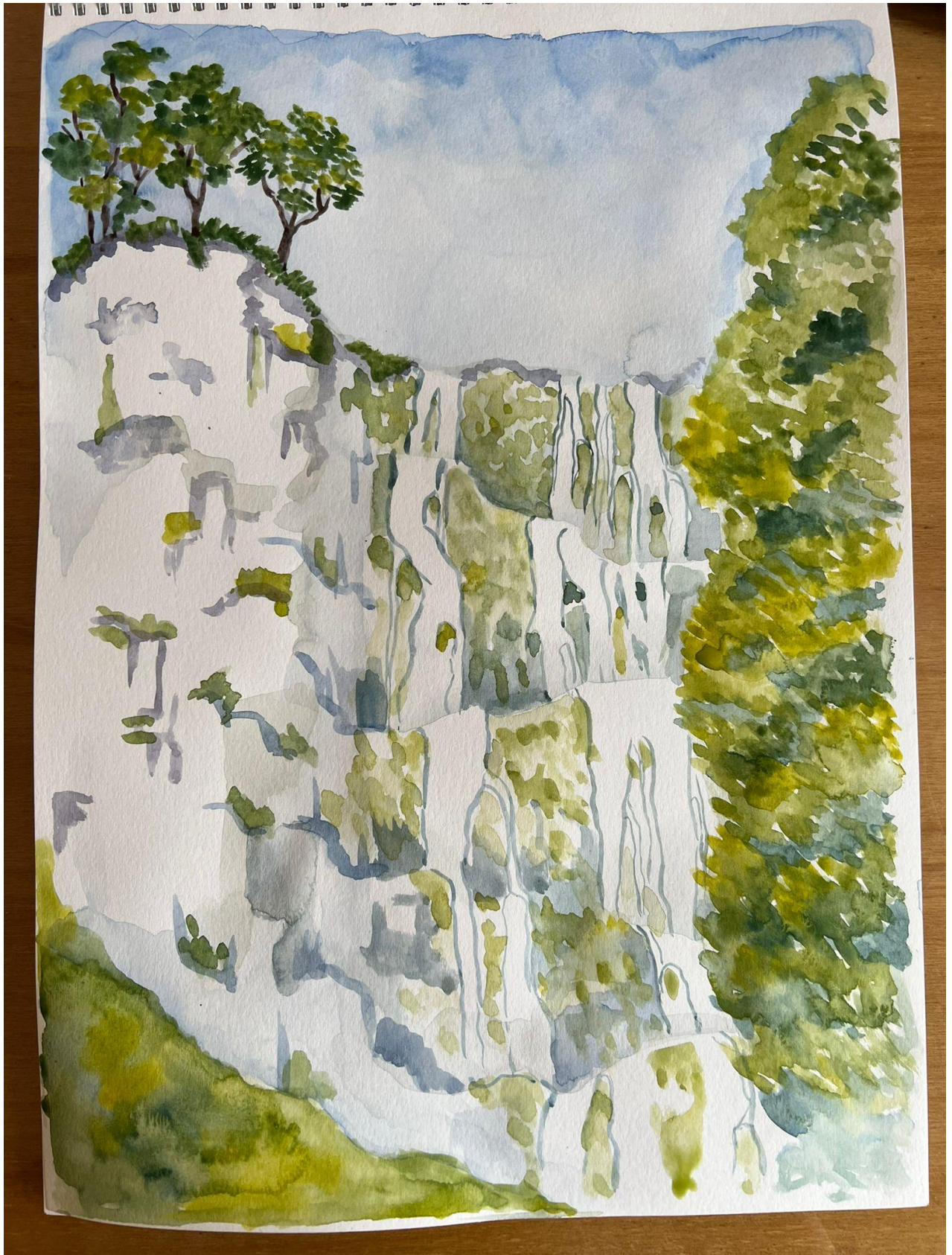


We used multiple shades of green to paint the leaves of the right-hand-side tree.





We saved all the different shades of green used for the tree leaves, watered them down, and added them to frame the waterfall - as the moss growing around on the damp rock wall.



We used grey in different intensities to add more of an uneven, fragmented texture to the left hand side rock wall. We interrupted the grey wall with drops of green (moss/vegetation).



Our final step was to add the shimmering of the waterfall.

For this, we used the smallest and thinnest brush we have and watered down blue mixed with white. We added thin blue veins to suggest the stream and the shimmering of the water down the wall.



And with that, my dearest watercolourists, we are done!

I hope you enjoyed this tutorial, as always please share your image with me if you paint this

Kindest regards,

Ioana