

Join our Care Home Conversation



Sandwell Safeguarding Adults Board are seeking to understand individuals views on Care Homes within Sandwell and the challenges faced by those running or working in the field.

If it were recommended that you or a loved one moved into a care home, what would your reaction be? Why?

We are seeking the views of;

Managers of care homes

Residents of care homes

Any individual working in a care homes

Family members of individuals living in a care home

All Citizens of Sandwell

Contact Leanne to share your experiences via a telephone call, Teams / Zoom meeting or in person

07901 114140

safeguarding_SSAB@sandwell.gov.uk

See overleaf for more ways you could participate

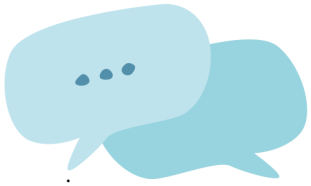


How Can YOU!

Join our Care Home Conversation

Complete a survey

Please email or call for a paper copy
or a link to our survey.



Attend a Focus Group / Drop in WEST BROMWICH TOWN HALL

High St, West Bromwich B70 8DJ

Wednesday 29th March 2023 **9:30 - 4pm**

Light
Refreshments
/ Lunch
Available

BRASSHOUSE COMMUNITY CENTRE

Brasshouse Lane, Smethwick B66 1BA

Wednesday 5th April 2023

9:30 - 4pm

Teams Online Sessions

Thursday 30th March 2023 **10:30 - 11:30 am**

Tuesday 18th April 2023 **6:30 - 7:30 pm**

Call or email Leanne to **book a time slot,**
receive a link or **Just drop in** on the day

07901 114140

safeguarding_SSAB@sandwell.gov.uk

Professionals can also book onto focus group. Log on to
<https://training.sandwellscb.org.uk/events-list?c=69>

Please be aware that your experiences will be treated with
the upmost respect. We want you to feel comfortable
sharing your honest opinions - your identity will not be
associated with your feedback.

The final report will be anonymised.

