

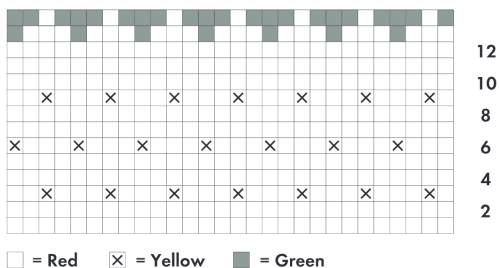
A Berry Fancy Hat

Advance Pattern

You will need yellow and red double knit yarn, some green for the stalk and leaves, and some strong tea or coffee!

Knitting

1. Using your red double knitting yarn and some small needles, cast on 28 stitches.
2. K2 Rows. Then, starting with a knit row and working in stocking stitch throughout ((Knit 1 row, Purl 1 row, repeat)) do the 12 rows as shown below.



3. For the next row, using green, K2 together across all stitches (14 st), then for the next row P2 together to end (7 stitches), followed by the next row which is K1, K2 together three times (4 stitches).
4. Transfer the 4 stitches from the right to the left needle, pulling the yarn tight and knitting them again. Repeat six times. This is an I-cord and will be the strawberry's stalk.
5. To finish, K2 5together twice then pass the first stitch over the second. Fasten off by pulling the yarn through the last switch.
6. Make up by sewing the side seams together and finish off by threading the yarn down the strawberry stalk.



Knitting pattern from Innocent Drinks



Send your hats to:

**The Fundraising Team, Age UK Solihull, The Core,
Central Library Building, Homer Road, Solihull, B91 3RG**