

OFFICIAL OPENING OF THE OLD CUSTOMS HOUSE

FOR

A G E C O N C E R N C O P E L A N D

ON SATURDAY 16TH FEBRUARY, 1985

BY

DR J A CUNNINGHAM MP

## HISTORY

The original Customs House was built in Whitehaven in 1681 and was sited in King Street. This was replaced in 1693 by premises built by the Lowther family in Quay Street.

The present Old Customs House was built in 1811 and is a listed building.

For the past 7 years Age Concern Copeland has rented the ground floor for a nominal sum from Copeland Borough Council and used it as a luncheon club for the elderly; 5450 lunches being provided in the past twelve months.

Latterly the large room on the first floor has been rented and 2898 per year attend art and craft classes.

## REFURBISHMENT

Copeland Borough Council, with the help of an Urban Aid Grant, has carried out essential repairs including rewiring.

British Nuclear Fuels plc, with apprentice labour and at no cost to Age Concern Copeland, very generously provided a fire escape, installed a new fire alarm/heat detection system, carried out a considerable programme of joinery and electrical work and completely redecorated the ground and first floors of the building.

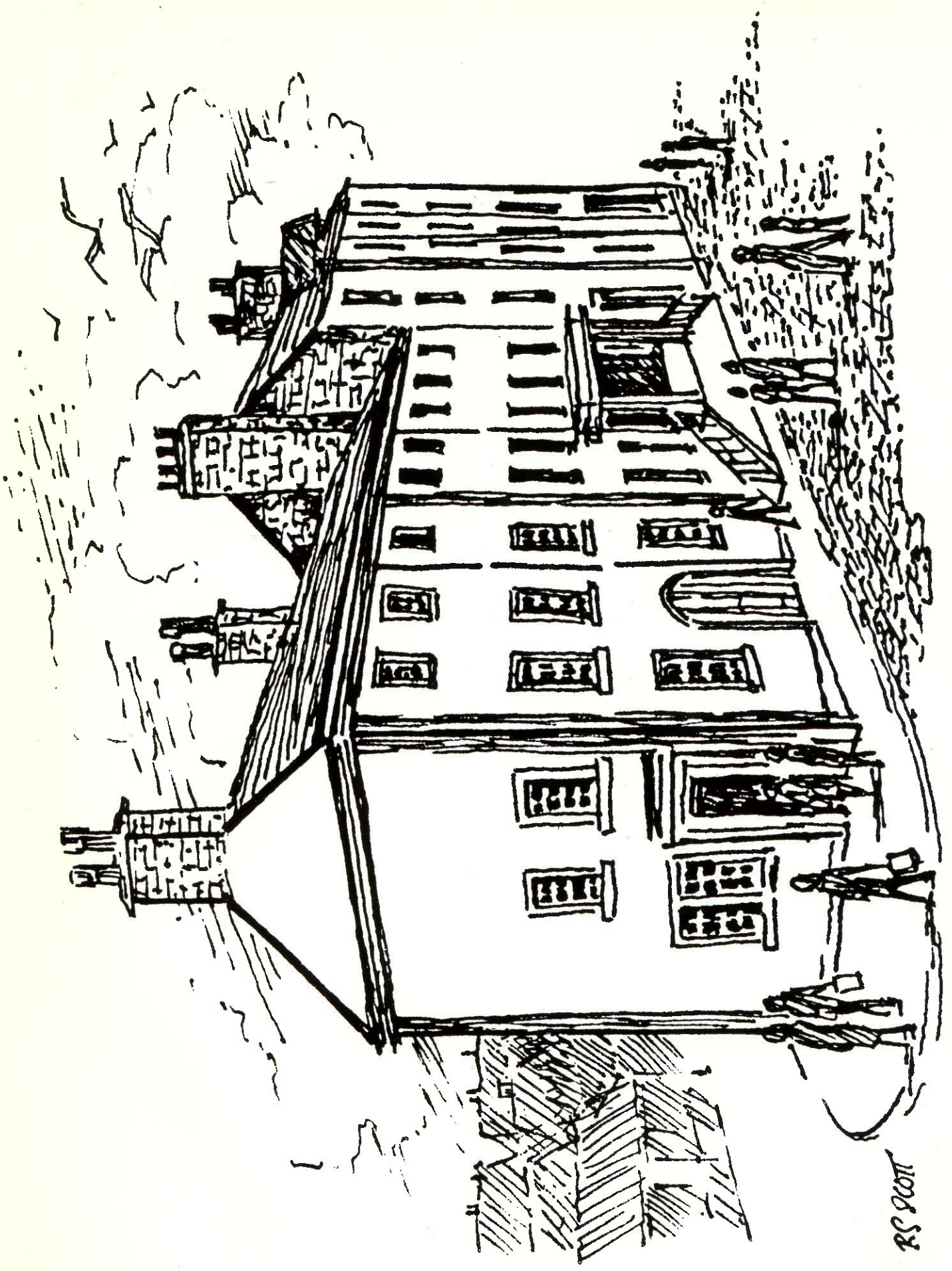
Many other people and firms have helped us with donations of goods or money or given us generous discounts to a value of approximately £3700.

To Copeland Borough Council, British Nuclear Fuels plc, and to everyone else who helped us in any way may we say 'thank you' for now we have a lovely building for the elderly people of Whitehaven.

## THE FUTURE

We will:-

- a. Carry on with our present activities ie luncheon clubs, art and craft classes.
- b. If we can find the funding for transport, start a day centre for 40 frail housebound elderly per week. This will relieve their carers and give the elderly people a nice day out each week.
- c. Use our 'large activities room' to increase the present activities for the active elderly.
- d. Use our office accommodation, staffed by 16 volunteers, to provide help and advice for the elderly (we helped 2500 in the past 12 months). Support our other activities run by volunteers from the office ie visiting service, day centres, lunch clubs, activity centres, outside advice centres etc.
- e. Sell donated goods in our charity shop which is run by 30 volunteers, ie clothes, furniture, bric a brac, bedding, kitchen utensils etc.
- f. Improve our training facilities for our volunteers.
- g. Endeavour to find other sources of revenue to replace our Urban Aid Grant when it terminates in March 1986.



RS SCOTT

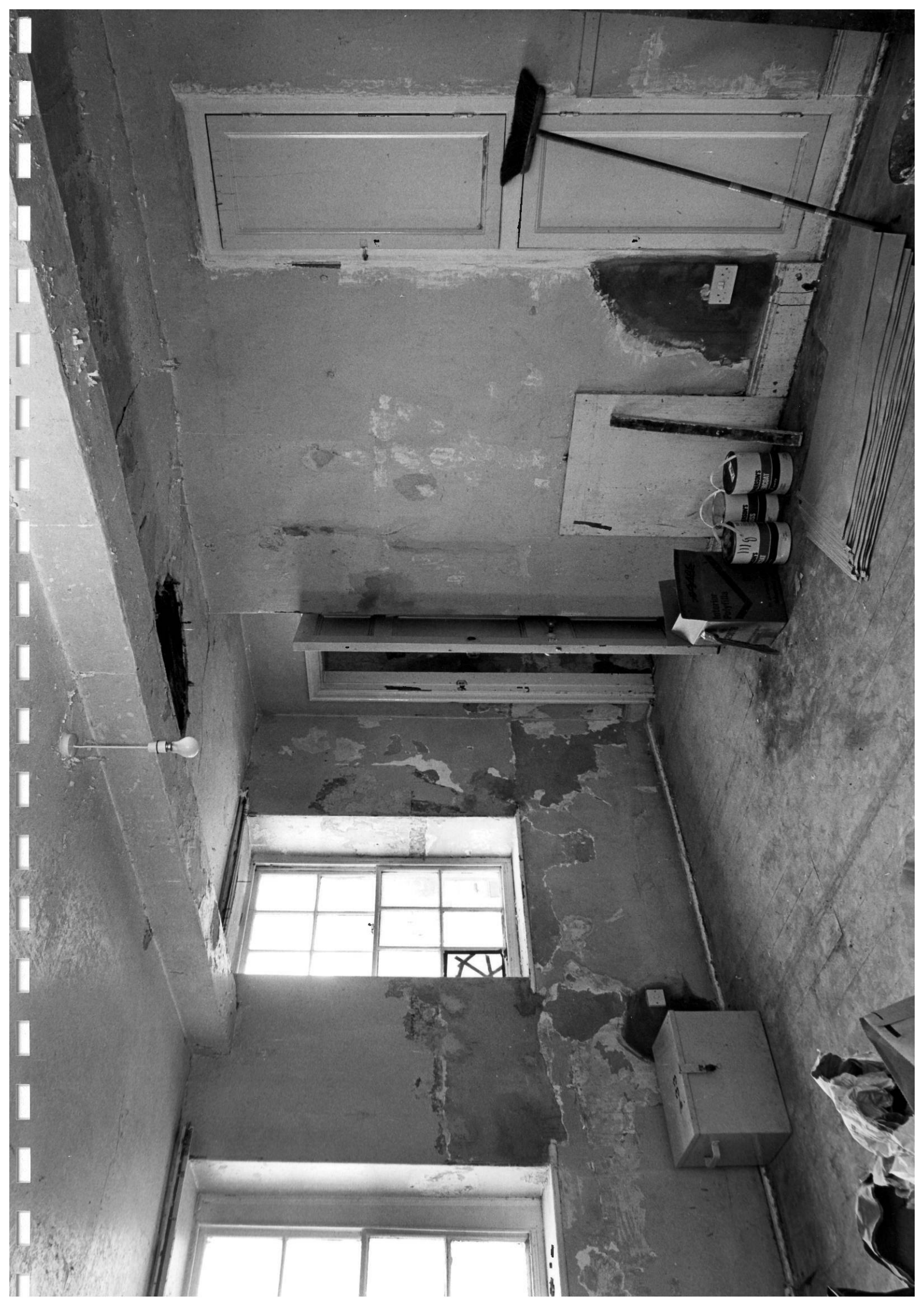








































Two elderly women are seated at the top of the table. The woman on the left has short, curly white hair and is wearing glasses, a white lace headscarf, and a purple sweater over a patterned blouse. She is smiling and looking towards the other woman. The woman on the right has her hair pulled back and is wearing a blue jacket. They are both holding silverware and appear to be eating or talking about their food.

In the middle of the table, a man with dark hair is wearing a brown jacket over a white collared shirt. He is laughing heartily, looking towards the woman on his right. The table in front of him has a plate of food, a glass, and a small yellow container. The woman on his right is wearing a grey knit hat and glasses, and is also laughing.

The woman on the far right is wearing a grey suit jacket and a green hat. She is smiling and looking towards the man in the middle. The table in front of her has a plate of food and a glass. The overall scene is one of shared happiness and companionship.





AGE CONCERN COPELAND  
Opened By Dr. J. A. Cunningham M.P.  
February 16<sup>th</sup> 1985  
Refurbished By Copeland Borough  
Council And B.N.F.L. Apprentices



ACKNOWLEDGEMENTS

Age Concern Copeland thank the following for their assistance in this venture:-

British Nuclear Fuels plc

British Telecom

Copeland Borough Council

J Dixon & Son House Furnishers

Northern Gas

Norweb

Albright & Wilson Ltd

J N Marsham, Solicitor

R J Mason, Domestic Electrical Appliances

Mrs McCormick

Quartzray Ltd

Sekers Fabrics Ltd

Mr Singleton

Social Services

Mrs Steele

Superdec D I Y Superstores

Thomas Graham and Whittle Ltd, Iron and Steel Factors

YWCA

and many other anonymous donors especially our volunteers.