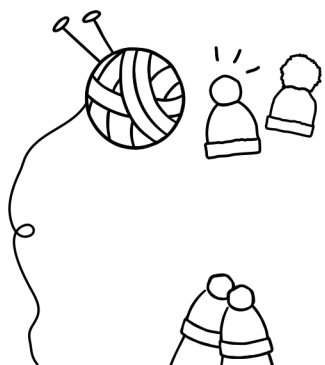
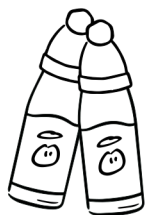


The Big Knit Campaign!



Create little hats
by knitting or
crocheting for the
Big Knit
campaign.



Innocent will
place them on
their smoothie
bottles.



For each locally
made hat, we will
receive 30p to
support our charity
at Age UK Wigan
Borough.



How does Age UK Wigan Borough Support people locally?

We are a local charity for local people in Wigan. We help people aged 50 and over to improve the quality of their lives. Our services tackle current problems such as financial worries, social isolation, and loneliness, offering support so people can remain in their homes.

Our Target

Collectively we would like to make
5000
hats by July 2025!

Our Address

Once you have done your hats
please send to our office:
74-80 Hallgate, WN1 1HP

See next pages for design ideas



Thank you!

Simple Bobble Hat pattern by Juliet Bernard



Yarn: Yellow and white

Needles: 4mm

Hat

Cast on 31 sts in yellow

Knit two rows

Beginning with a knit row work 12 rows in st st

Next row: k2tog to last st, k1 (16sts)

Next row: purl

Next row: k2tog to end (8sts)

Cut the yarn leaving approx 10cm length. Thread this through sewing needle and bring through stitches and pull up to tighter

Making up

Use a sewing needle to join side seams.

Make a pompom in white and sew securely to top of the hat.

Stripe Hat, pattern by Juliet Bernard



Yarn: Blue and white DK

Needles: 4mm

Hat

Cast on 31 sts in blue

Knit two rows (garter st)

Change to white and beginning with a knit row continue in st st as follows

2 rows white, 2 rows blue, 2 rows white, 2 rows blue, 2 rows white, 2 rows blue.

Continue in blue

Next row: k2tog to last st, k1 (16sts)

Next row: purl

Next row: k2tog to end (8sts)

Cut the yarn leaving approx 10cm length. Thread this through a sewing needle and bring through stitches and pull up to tighten.

Making up

Use a sewing needle to join side seams.

Make a pom-pom in blue and white and sew securely to top of the hat.

Abbreviations: St(s) - stitch(es) / st st stocking stitch / k2tog - knit two together

Simple Crochet Hat

crochet pattern by Juliet Bernard

Yarn: Red and red

Crochet hook: 3.5mm

Hat

Using the magic loop technique make 6dcs into the ring. Join with a ss.

Round 1: ch1 make 2dc in each dc from the previous round. Join with ss (12sts)

Round 2: ch1 , *1 dc, 2dc in next dc, repeat from * to end of the round. Join with ss (18sts)

Round 3: ch1 *1 dc in next 2 dcs, 2dc in next dc, repeat from * to the end of the round. Join with ss (24sts)

Round 4: ch1, 1 dc, in each dc to the end of the round.
Join with ss.

Repeat round 4, 4 more times.

Fasten off and sew in ends

Make a red pompom and sew to the top..

Abbreviations: ch - chain / st(s) - stitch(es) / dc - double crochet / ss - slip stitch



Blue Bobble Hat pattern by Juliet Bernard

Yarn: Blue and white DK

Needles: 4mm

Hat

Cast on 31 sts in white

Row 1: k1, *p1, k1 repeat from *to end of row

Row 2: p1, *k1, p1 repeat from *to end of row

Change to blue and beginning with a knit row work 12 rows in st st

Next row: k2tog to last st, k1 (16sts)

Next row: purl

Next row: k2tog to end (8sts)

Cut the yarn leaving approx 10cm length. Thread this through a sewing needle and bring through stitches and pull up to tighten.

Making up

Use a sewing needle to join side seams.

Make a pompom in blue and sew securely to top of the hat.





Needles: 4mm

Hat

Cast on 31 sts in white

Knit 1 row (garter st)

Change to blue and knit 1 row

Now work from the chart below in stocking stitch until you've finished row 14

Continue in blue

Next row: k2tog to last st, k1 (16sts)

Next row: purl

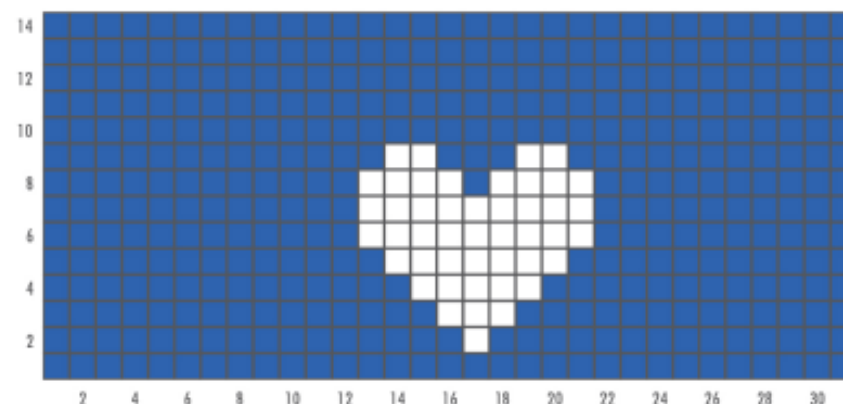
Next row: k2tog to end (8sts)

Cut the yarn leaving approx 10cm length. Thread this through a sewing needle and bring through stitches and pull up to tighten.

Making up

Use a sewing needle to join side seams.

Make a pompom in blue and sew securely to top of the hat.



Post Box Hat pattern by Juliet Bernard

Yarn: Red, white and black

Needles: 4mm

Hat

Cast on 31 sts in black

Knit 2 rows (garter st)

Change to red.

Now work from chart in stocking stitch until row 13 has been finished

Continue in red

Next row (ws): knit all sts

Next row: k1, *k2tog, k3, repeat from * to the end of the round (25sts)

Next row: purl all sts.

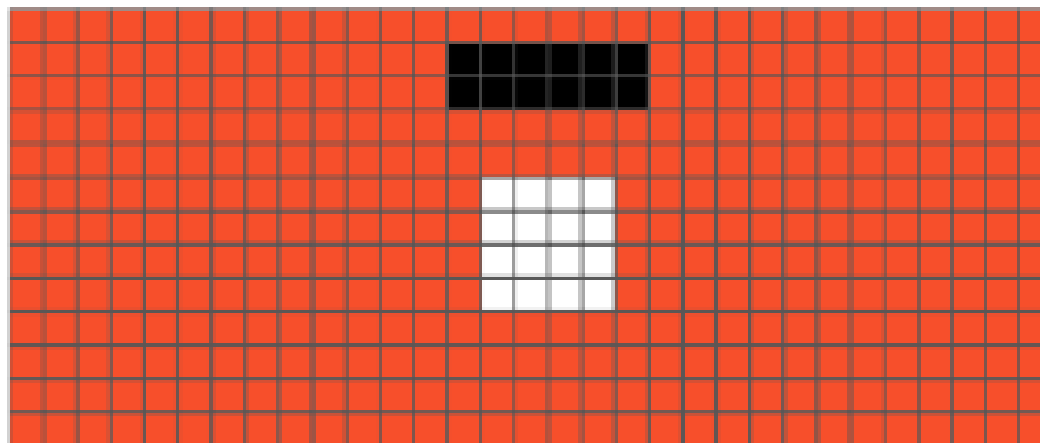
Next row: k1 *k2tog, k2, repeat from * to the end of the round (19sts)

Next row: purl all sts.

Next row: k1 *k2tog, k1, repeat from * to the end of the round (13sts)

Next row: purl all sts.

Next row: k1, *k2tog, repeat from * to the end of the round (7sts)



Cut the yarn leaving approx 10cm length. Thread this through a sewing needle and bring through stitches and pull up to tighten.

Making up

Use a sewing needle to join side seams.



Apple Hat pattern by Juliet Bernard



Hat

Cast on 31 sts in green
 Beginning with a knit row continue in st st for 14 rows
 Next row: k2tog to last st, k1 (16sts)
 Next row: purl
 Next row: k2tog to end (8sts)
 Change to brown
 Next row: p2tog 4 times then work an icord for 6 rows.
 Next row: K2tog twice. (2sts)
 Next row: k2tog and fasten off

Leaf

CO 3 st in green
 Row 1: kfb k1 kfb (5sts)
 Row 2: purl
 Row 3: k2 m1, k1, m1, k2 (7sts)
 Row 4: purl
 Row 5: knit
 Row 6: purl
 Row 7: k1, ssk, k1, k2tog, k1 (5sts)
 Row 8: purl
 Row 9: ssk, k1, k2tog (3sts)

Making up

Use a sewing needle to join side seams and sew in the ends. Attach the leaf to the stalk. Embroider eyes and mouth in black and apple cheeks in red.

Sombrero Hat, intermediate crochet pattern

by Juliet Bernard



Yarn: Red and yellow

Crochet hook: 3.5mm

Hat

You will be working in spirals so you might like to use a locking stitch marker to keep track of the round.

Using the magic loop technique and red yarn make 6dcs into the ring. Join with a ss.

Round 1: make 2dc in each dc from the previous round.
Join with ss (12sts)

Round 2: *1 dc, 2dc in next dc, repeat from * to the end of the round. Join with ss (18sts)

Round 3: *1 dc in next 2 dcs, 2dc in next dc, repeat from * to the end of the round. Join with ss (24sts)

Round 4: 1 dc, in each dc to the end of the round. Join with ss.

Repeat round 4, 3 more times.

Round 8: * 2dc in next st, 5dc, repeat from * to the end of the round (28sts)

Round 9: *2dc in next st, 1dc, repeat from * to the end of the round (42sts)

Round 10-11: 1dc in each st

Round 12: change to yellow, 1dc in each st

Fasten off and sew in ends.

Abbreviations: ch - chain / st(s) - stitch(es) / dc - double crochet / ss - slip stitch

Pineapple Hat pattern by Juliet Bernard



Yarn: Yellow and green DK

Needles: 4mm

Hat

Cast on 37 stitches in yellow.

Row 1: k to end

Row 2: *p3tog, (p1, k1, p1) into the same stitch, repeat from * to end of row p1.

Row 3: k1, *k3tog, (k1, p1, k1) into the same stitch, repeat from * to the end of the row.

Repeat rows 2 and 3, three more times and row 2 once more.

Next row: *k2tog repeat until last st, k1 (19sts)

Next row: *p2tog repeat until last st, k1 (10sts)

Next row: *k2tog repeat across all sts (5sts)

Fasten off by threading a yarn through 5sts and drawing tight.

Leaves

Cast on 30 stitches in green and work 4 rows in st st beginning with a knit row. This is the stalk.

Row 5: K5 and turn leaving remaining stitches on a stitch holder.

Row 6: P5 and turn.

Row 7: K2tog K1 K2tog (3sts)

Row 8: P3

Row 9: K3

Row 10: P3tog fasten off.

Re-attach yarn to the stalk and work rows 5 to 10 for the second leaf on the next 5sts. Continue working leaves as above until you have made 6 leaves. Sew in ends.

Making Up

Sew up pineapple and roll up the stalk and sew to the top of the pineapple

Abbreviations: k - knit / p - purl / st(s) - stitch(es) / p3tog - purl 3 sts together / k3tog knit 3 sts together / k2tog - knit 2 sts together / st st - stocking stitch

Note: It is the wrong side of the knitting that looks most like a pineapple

Lion hat, Advanced pattern by Juliet Bernard

Yarn: Yellow DK with some brown for the mane and black for the face

Needles: 4mm

Hat

Cast on 31 sts in yellow

Beginning with a knit row continue in st st for 14 rows

Next row: k2tog to last st, k1 (16sts)

Next row: purl

Next row: k2tog to end (8sts)

Cut the yarn leaving approx 10cm length. Thread this through a sewing needle and bring through stitches and pull up to tighten.

Head

Cast on 12 sts

Row 1: *k1,kfb repeat from * to the end of the row (18sts)

Row 2: *p2, pfb repeat from * to the end of the row (24sts)

Row 3: repeat row 1 (36sts)

Beginning with a purl row continue in st st for 13 rows.

Row 17: *k1, k2tog repeat from * to the end of the row (24sts)

Row 18: *p2, p2tog repeat from * to the end of the row (18sts)

Row 19: repeat row 17 (12sts)

Row 20: k2tog across all sts (6sts)

Cut the yarn leaving approx 10cm length. Thread this through a sewing needle and bring through stitches and pull up to tighten.

Making up

Sew the head up stuffing with fibre as you go.
Embroider the face and the mane.

Sew up the hat and sew on the head

Abbreviations: St(s) - stitch(es) / st st - stocking stitch / k2tog - knit two together / p2tog - purl two together / kfb - knit into the front and back of the same st / pfb - purl into the front and back of the same st



Chick Hat Fan design



Head

Using 4mm needles
Cast on 25 in yellow
Start with a K row and SS 4 rows.
(K3, inc) repeat to end
SS 7 rows
(K2 tog) repeat to end
Purl
(K2 tog) repeat to end
Purl
B & T tightly

Beak

Cast on 10
(K2 tog, K3) repeat to end
(P2 tog, P2) repeat to end
(K2 tog, K1) repeat to end
(P2 tog) repeat to end
Pass first stitch over last
B & T tightly

Sew up the head. Create two loops on top of the head and secure. Cut through the loops to create the tuft.! Sew the side of the beak, position on the face and sew in place.

Mouse on Cheese Hat Fan design



Using 4mm needles

Cast on 32 stitches in cheese colour.

Row 1: K10, P1, K10, P1, K10

Row 2: P10, K1, P10, K1, P10

Repeat these 2 rows 4 times

Cast off 10, P12, Cast off 10

Rejoin and Purl 1 row

Continue in SS, dec 1st at the start of every row until 1st remains,

B & T tightly

Cast on 5 st in mouse colour.

Row 1: (K1, inc) rpt to last st, K1 (7st)

Row 2: Purl

Row 3: (K1, inc) rpt to last st, K1 (10st)

Rows 4 & 5: SS

Rows 6 - 9: Cont in SS dec 1st beg & end of every row. (2st)

Pass one stitch over the other.

B & T tightly for nose leaving a long end.

To Make Up - Use a permanent black marker pen to draw 'holes' all over the cheese as illustrated. Then construct the cheese wedge by oversewing all the seams on the outside - I also included oversewing the vertical lines created by the change in stitch. This allows the knitting to form a better overall shape. Starting at the nose and with right side out, oversew the row ends of the mouse, leave a small gap at the tail end. Insert a tiny bit of stuffing, then continue to oversew the seam. Cut two small ears in pink felt and sew them in place with cotton. Work a tiny nose and eyes with black cotton. Use the long tail end to create a 3" twisted cord for the tail, use the rest of this yarn to sew the mouse to the cheese wedge. I found it easier to place the cheese on the bottle before stitching the mouse on. Allow a smile to creep across your face as you marvel at your creation!

Shaun the Sheep Fan design



Using 4mm needles cast on 28st in white
 Row 1: Knit: 4xB, 7xW, 6xB, 7xW, 4xB
 Row 2: Purl: 5xB, 5xW, 8xB, 5xW, 5xB
 Row 3: Knit: 6xB, 3xW, 10xB, 3xW, 6xB
 Row 4: Purl: 7xB, 1xW, 12xB, 1xW, 7xB
 Row 5: Knit: 11xB, 1xG, 4xB, 1xG, 11xB
 Rows 6 - 12: Continue in SS in black
 Row 13: K7, K2tog, K10, K2tog, K7 (26st)
 Row 14: Purl
 Row 15: K7, K2tog, K8, K2tog, K7 (24st)
 Row 16: Purl
 Row 17: K6, K2tog, K8, K2tog, K6 (22st)
 Row 18: Purl
 Change to white Sirdar snowflake wool
 Rows 19 - 20: Knit
 Row 21: P2 (P2tog, P2)rpt to end (17st)
 Row 22: Knit
 Row 23: Purl
 Row 24: K1 (K2tog)rpt to end (9st)
 Row 25: Purl
 B & T

W = White
 B = Black
 G = Dark Grey

Ears - Make 2

Start at top and cast on 3 in black

Row 1: Knit

Row 2: K1, inc, K1 (4st)

Rows 3 & 4: Knit

Row 5: K1, inc, K2 (5st)

Rows 6 & 7: Knit

Row 8: K2, inc, K2 (6st)

Rows 9 - 13: Knit

Row 14: K2tog, K2, K2tog (4st)

Cast off

To Make Up:

Use the dark grey ends to work a stitch across the top of the grey V stitch on the right side. Secure ends on the reverse.
 Oversew row ends of main head piece and turn inside out.
 Secure the yarn at the base of the ear.
 At the top of the ear fold the rows in half and secure the pinched shape with the yarn end for about 1cm.
 Sew the ears to the side of the head as illustrated - with the concave shape towards the face.

Attach two googly eyes to complete Shaun.

Smoothiesaurus Fan design



Using 4mm needles cast on 40st for base.
 Knit 2 rows
 Beginning with a knit row work in stocking stitch throughout.
 Cast off 3 st beg of next 4 rows (28st)
 Dec 1st beg of next 8 rows (20st)
 Cast off 6st, Knit 8, Cast off 6st
 Rejoin and work 6 rows in SS on the centre 8st, beginning with a P row.
 Next row: P3, inc, inc, P3 (10st)
 Next row: K3, (inc x 4), K3 (14st)
 Next row: P3, (inc, P1)x4, P3 (18st)
 SS 3 rows
 Next row: P2tog, P14, P2tog
 Cast off

Spines

Cast on 25

Row 1: Knit

Row 2: K1 (ym, K2 tog)rpt to end

Row 3: Knit

Cast Off

Making Up

Body: With right sides in, join row ends to create tail and head, join cast off sections to create back. Turn right side out and oversew the base of the tail, leaving a space that will fit over the bottle top. Place a small bit of stuffing in the head to give a bit of shape.

Face: Tie a good knot in the end of some black wool, insert the needle inside the Smoothiesaurus and up through the stuffing to emerge in an eye position. Work a French knot to create the eye. Take the wool through the stuffing and work the other eye in the same way. Bring the wool out on one side of the face, take under the chin and back into the cheek to create a smile. Secure end.

Spines: Fold the spines in half with the stocking stitch on the outside. Oversew the cast on and cast off edges. Lay the spines in place on the body and sew in place.